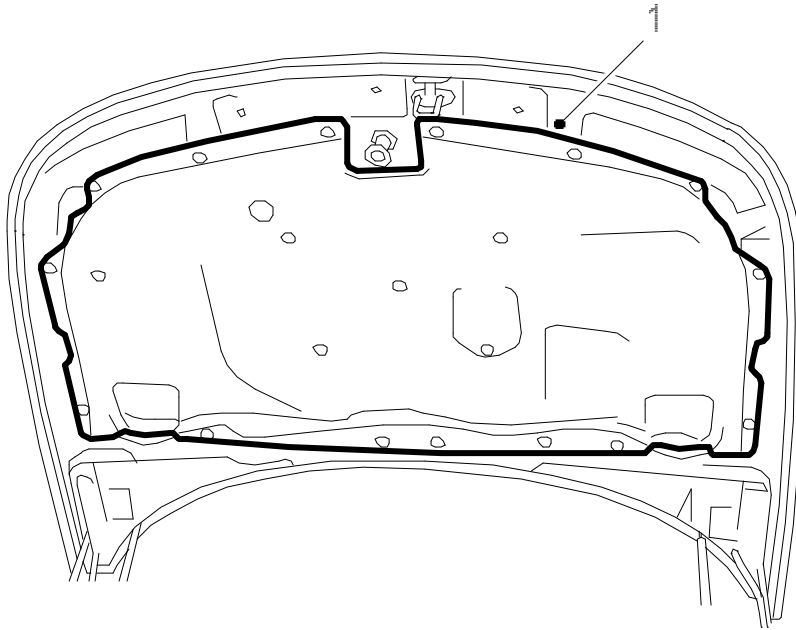


**Windscreen washer hoses****To remove**

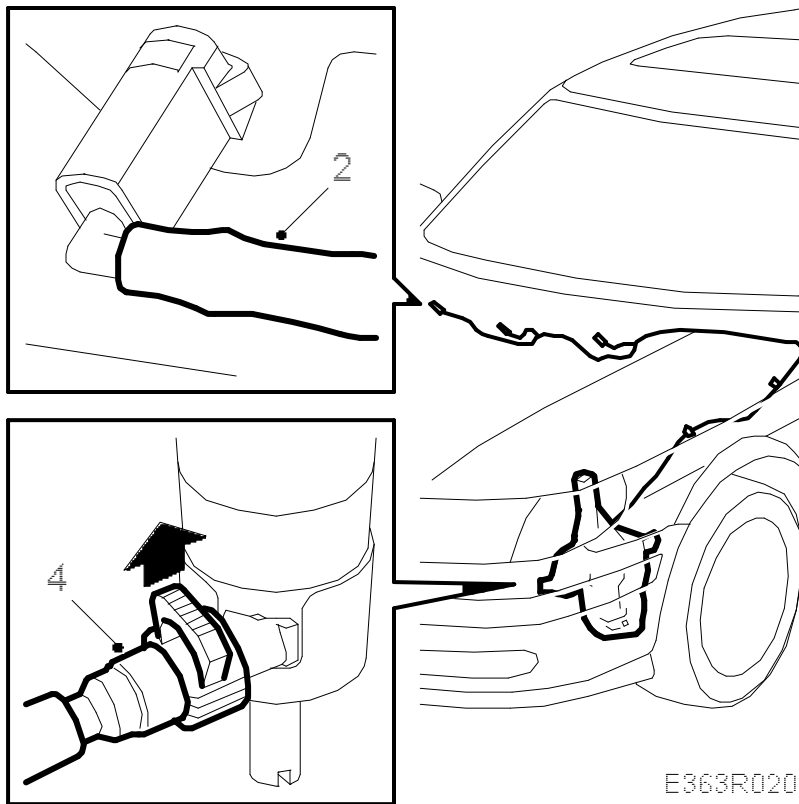
1. Remove the bonnet insulation.



E363R019

- 2.

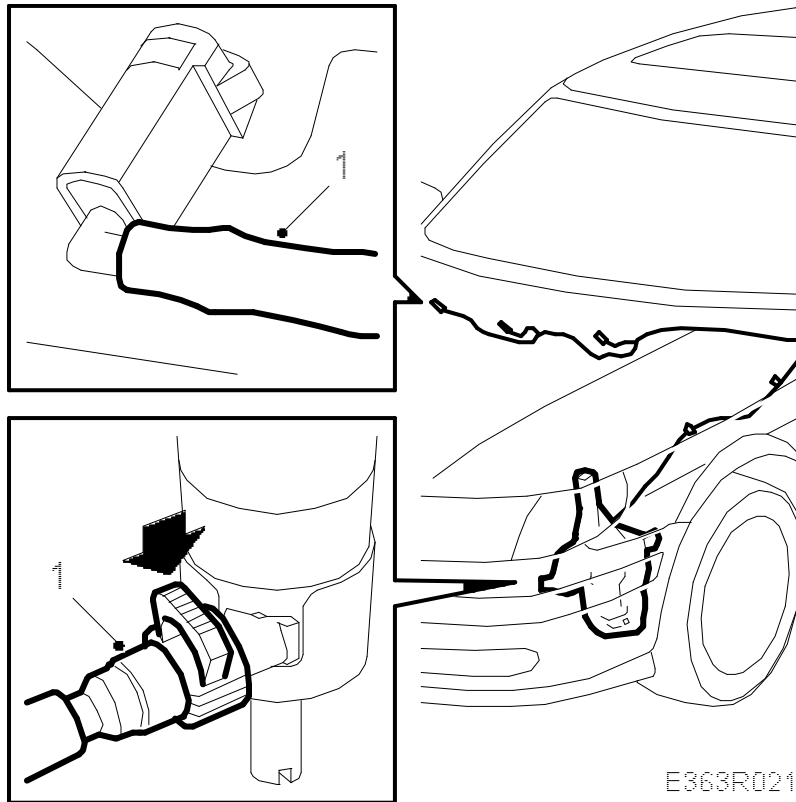
Disconnect the hoses from the nozzles in the bonnet.



E363R020

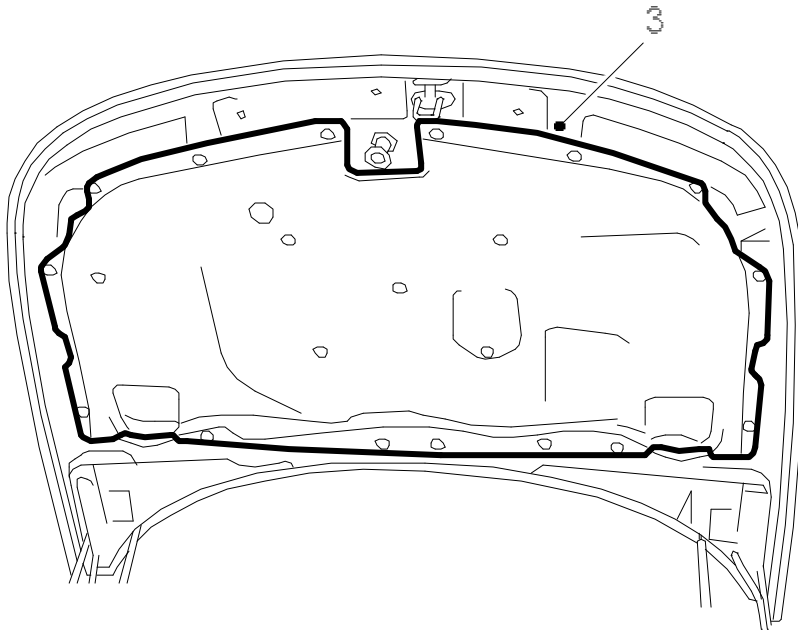
3. Remove the front left-hand wing liner.
4. Disconnect the hose from the pump and pull out the hose.

**To fit**



1. Fit the new hose in the same way as the old one was fitted.
2. Fit the wing liner.
- 3.

Fit the bonnet insulation.



E363R022