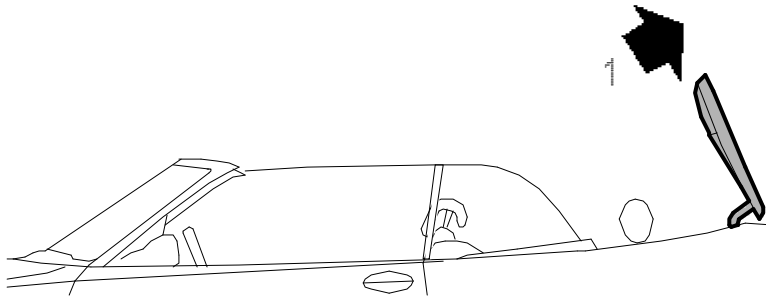


Rear side trim, CV**To remove**

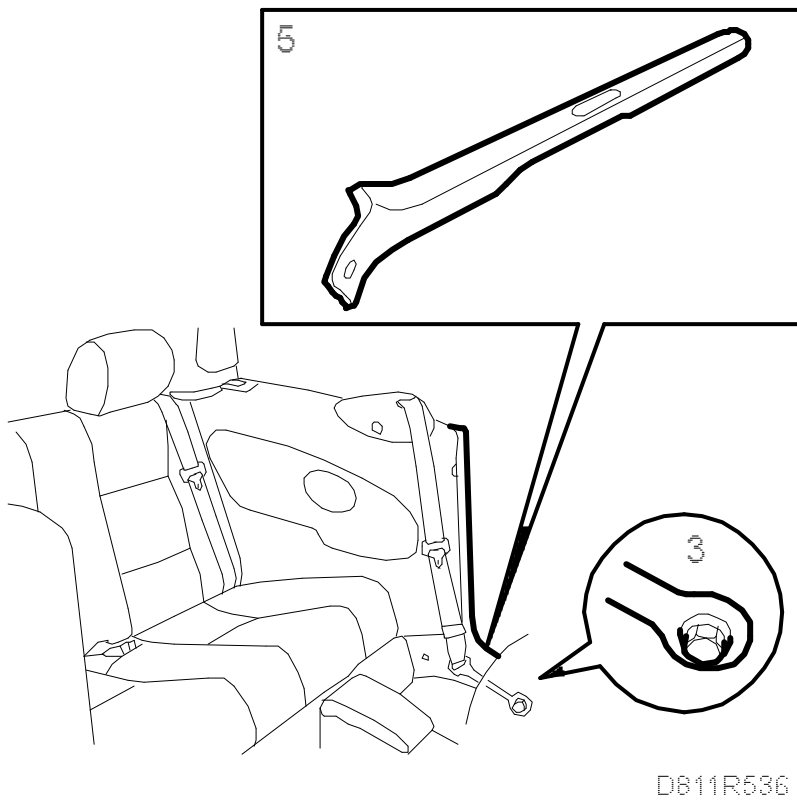
1. Operate the soft top as shown in the illustration.



D811R722

2. Remove the rear seat cushion.
- 3.

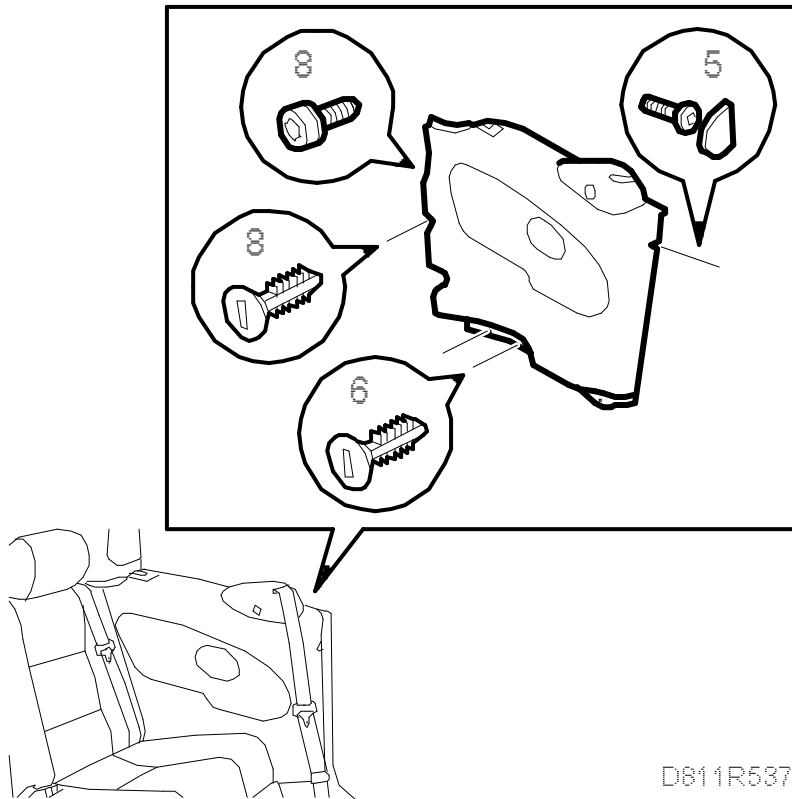
Remove the bolt which secures the front seat belt to the floor.



4. Remove the scuff plate.

5.

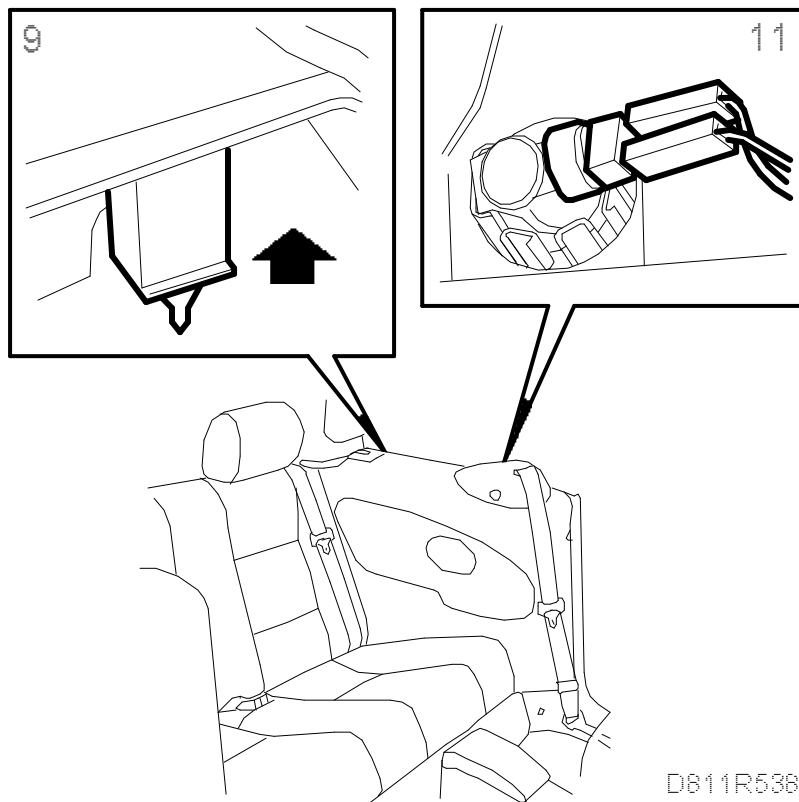
Remove the cover and remove the screw which secures the trim to the B-pillar.



D811R537

6. Remove the plastic screws which secure the trim to the lower edge.
7. Fold the backrest forward.
8. Remove the bolt and plastic screw securing the trim at the rear edge.
- 9.

Carefully pull up the trim to remove it from the clip at the upper rear corner. Hold the clip holder with one hand so that the holder and trim are not damaged.



D811R536

Important

Do not bend the trim. The upholstery or clip can be damaged.

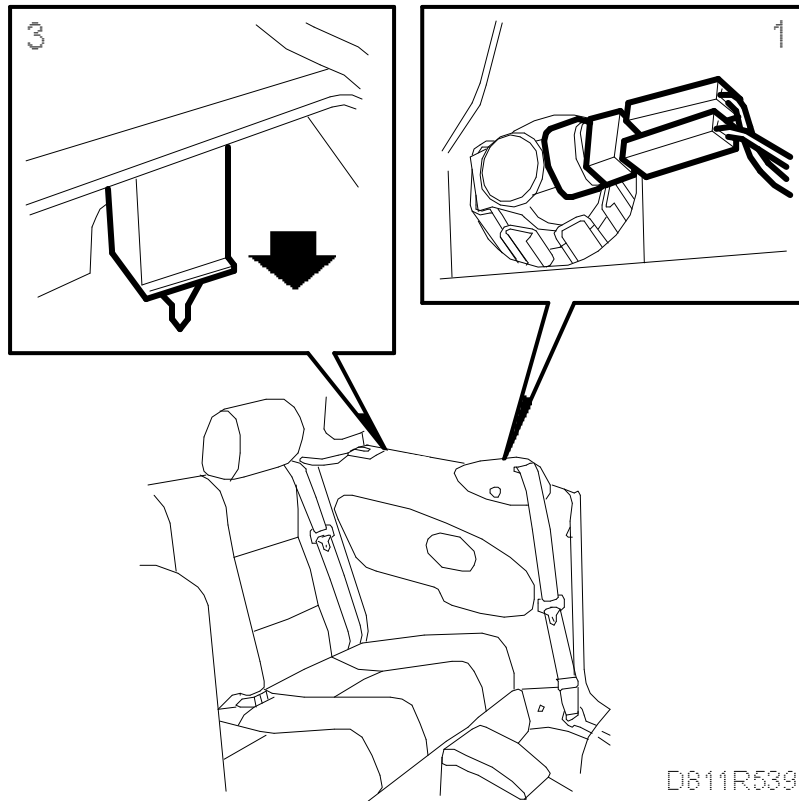
10. Remove the seat belt from the side trim.

11. Remove the lamp connector and remove the side trim.

To fit

1.

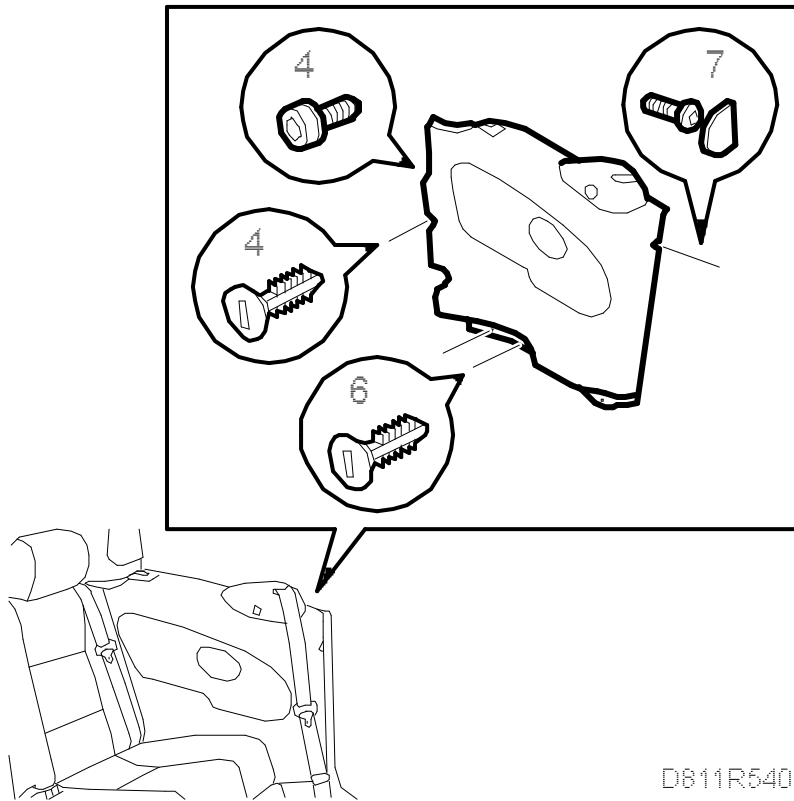
Plug in the lamp connector.



D811R539

2. Insert the seat belt through the strap guide.
3. Fit the upholstery and press in the clip into the upper rear corner. Make sure that the rubber seal fits correctly to the trim.
- 4.

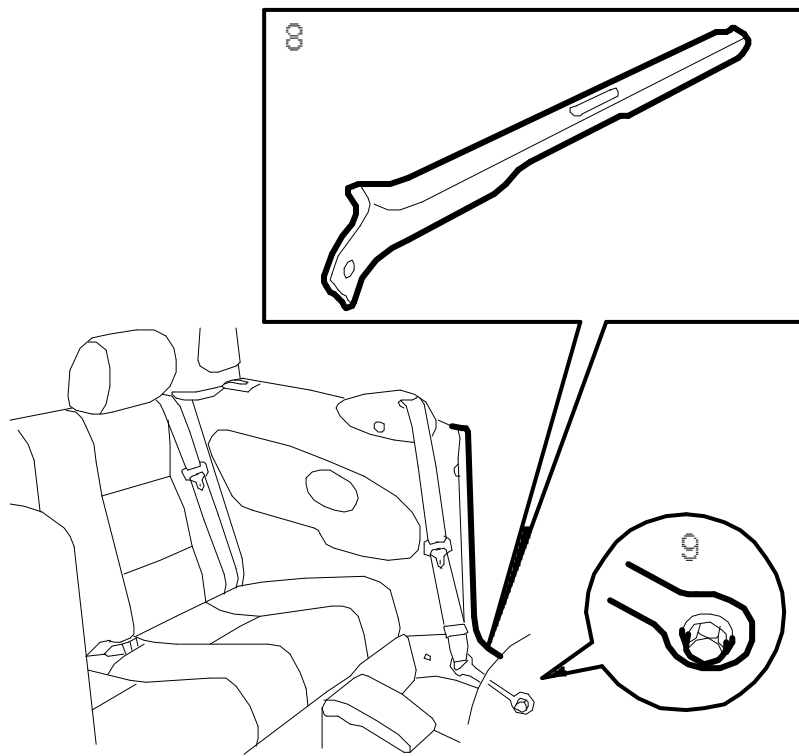
Tighten the bolt and fasten the plastic screws that secure the side trim to the rear edge.



D811R540

5. Raise the backrest.
6. Fasten the plastic clips that secure the trim at the bottom.
7. Tighten the bolt that secures the trim to the B-pillar and then press on the cover.
- 8.

Fit the sill scuff plate.



D811R541

9. Check that the seat belt is not twisted and then tighten the bolt that secures the seat belt to the floor.

Tightening torque: 45 Nm (33.3 lbf ft)

10. Refit the seat cushion in the rear seat.