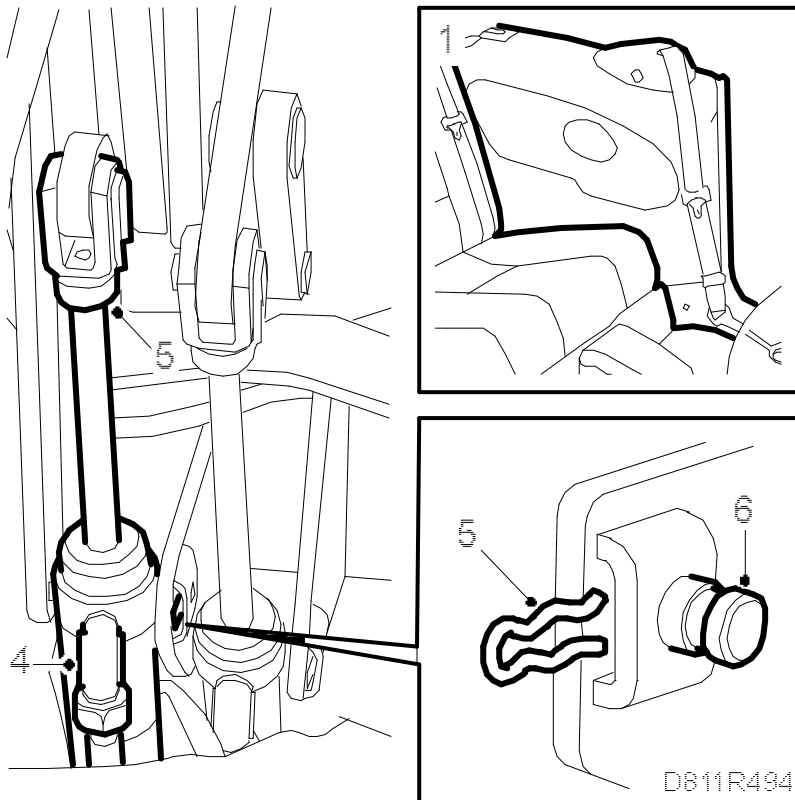


Main cylinder

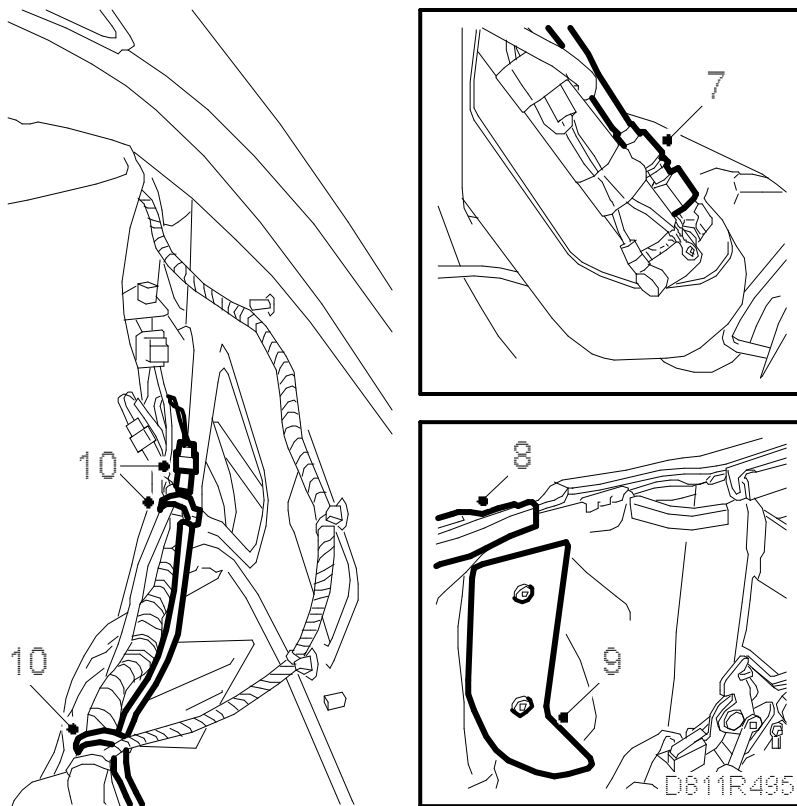
Removing

The following description deals with the left side cylinder. Only steps 1-7 apply for the right side cylinder.

1. Remove the side trim. See [Removing](#).

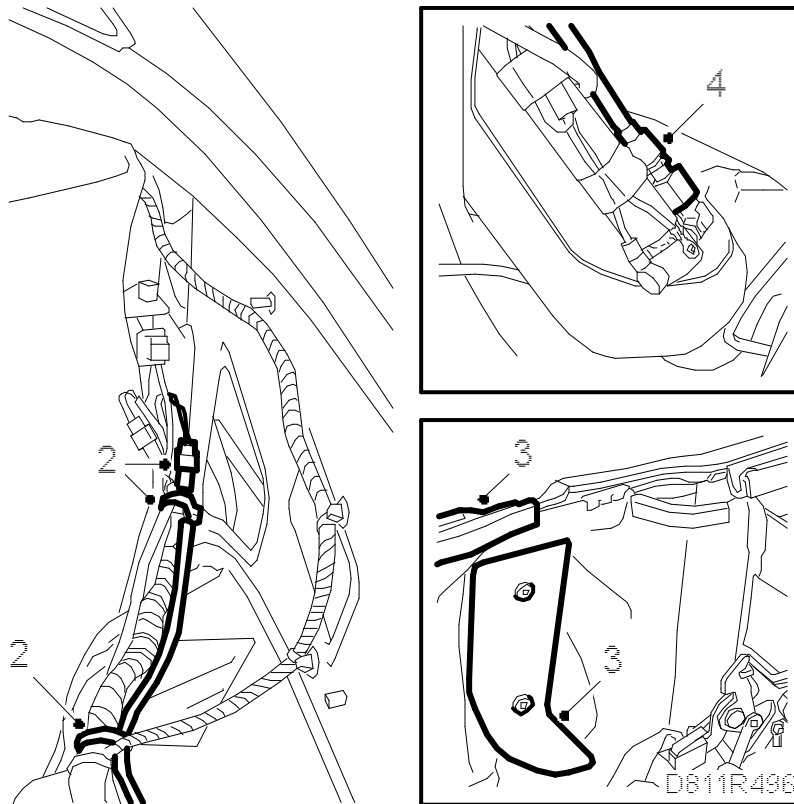


2. Run the soft top so that the soft top cover and the fifth bow are open.
3. Fit a rag as protection around the hose at the upper connection.
4. Remove the hose from the upper connection and plug it.
5. Remove the clip securing the cylinder to the soft top mechanism. Remove the clip securing the pushrod to the soft top mechanism.
6. Remove the pin and remove the cylinders from the soft top mechanism.
7. Remove the hose from the lower connection and plug it. (Right side: Lift out the cylinder.)



8. Remove the outer window seal.
9. Loosen the luggage compartment upholstery. Tap in the pins on the side protectors and pull out the clips.
10. Cut the cable ties and unplug the connectors.
11. Pull out the wiring harness under the soft top storage and lift out the cylinder.

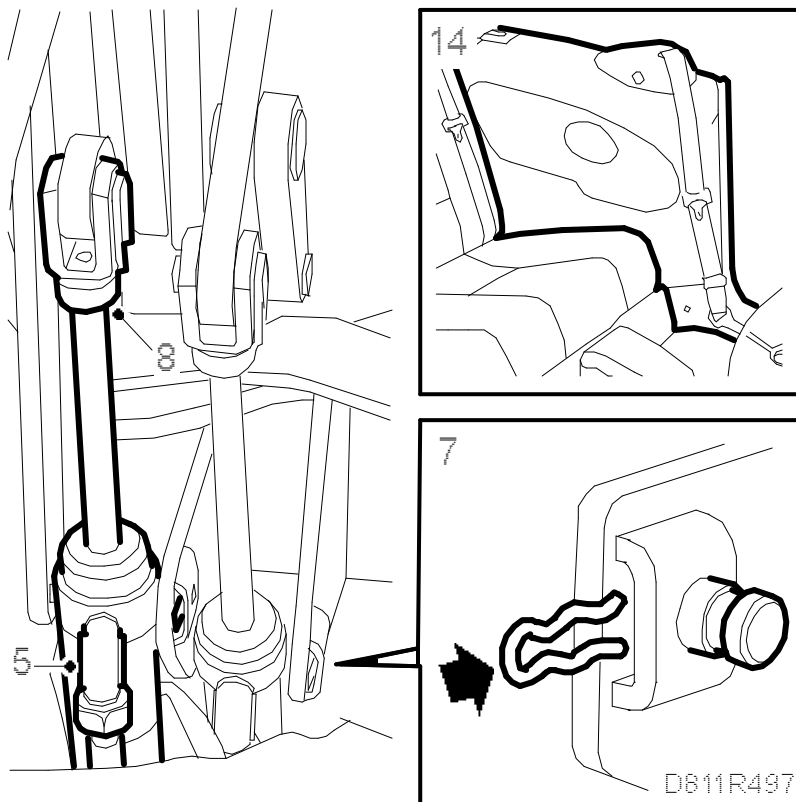
Fitting



The following description deals with the left side cylinder. Steps 2 and 3 do not apply on the right side.

1. Fit the cylinder.
2. Insert the wiring harness under the soft top storage and plug in the connectors. Fit new cable ties. (Not right side)
3. Fit the luggage compartment upholstery and plastic clips for the side protectors. Fit the window seal. (Not right side)
- 4.

Connect and tighten the lower hydraulic hose.



5. Lift up the cylinder, connect and tighten the upper hydraulic hose.
6. Turn the cylinder housing and fit the stub axle in the soft top mechanism.

Important

Never turn the piston rod in the cylinder housing as the end position switch spring can twist, which will result in damage to the cylinder housing or the piston rod may jam.

7. Fit the pin so that the deep groove ends up in the space for the lock. Then move the clip into the groove in the soft top mechanism and pin.
8. Press in the pin and lock with the clip.
9. Wipe clean the soft top storage from any oil spills.
10. Run the soft top up and down 5 times and check the function. Check to make sure that there are no oil leaks.
11. Check the oil level. See ➡
12. Bleed the system of air by running the soft top up and down 5 times and check the function and hoses.

13. Check the oil level again and top up if needed.
14. Fit the luggage compartment upholstery and the outer part of the soft top storage.
(Not right side)
15. Fit the outer window seal. (Not right side)
16. Fit the rear side trim. See [Fitting](#).
17. Run the soft top to closed position and lock it to the windscreen frame.
18. Connect the diagnostics tool, erase any diagnostic trouble codes.