

IB993

## Technical data

General particulars .....	220
Engine .....	223
Engine oil.....	223
Engine variants .....	225
Electrical system.....	225
Drive belts.....	225
Manual transmission .....	226
Automatic transmission ..	226
Suspension.....	226
Steering.....	226
Brake system.....	227
Rims and tires .....	227
Plates and labels.....	229

**General particulars**

Overall length, with bumper(s):

Coupé/5-door/Convertible \_\_\_\_\_ 182.3" (4629 mm)

Viggen \_\_\_\_\_ 182.7" (4639 mm)

Overall width, including door mirrors \_\_\_\_\_ 76.2" (1936 mm)

Maximum height \_\_\_\_\_ 56.2" (1428 mm)

Maximum height when the soft top is being  
operated (Convertible) \_\_\_\_\_ approx. 87"  
approx. 2200 mm

Wheelbase \_\_\_\_\_ 102.6" (2605 mm)

Track:

front, Coupé/5-door/Convertible \_\_\_\_\_ 57.2" (1452 mm)

front, Viggen \_\_\_\_\_ 57.7" (1466 mm)

rear, Coupé/5-door/Convertible \_\_\_\_\_ 56.8" (1442 mm)

rear, Viggen \_\_\_\_\_ 57.3" (1456 mm)

Ground clearance at max. weight \_\_\_\_\_ approx. 3.9"  
(100 mm)

Number of occupants, incl. driver:

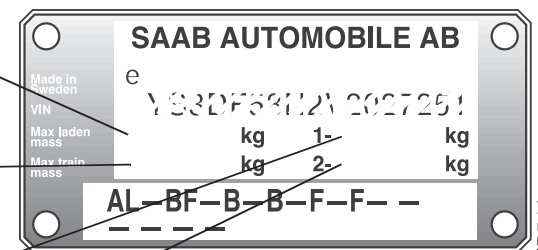
Coupé and 5-door \_\_\_\_\_ 5

Convertible \_\_\_\_\_ 4

Turning circle:

measured at vehicle extremities \_\_\_\_\_ 36.4 ft. (11.1 m)

curb to curb \_\_\_\_\_ 34.4 ft. (10.5 m)

*Gross vehicle weight (GVW)**Maximum train weight (GVW + max. trailer weight)**Maximum axle load, front**Maximum axle load, rear*

Permissible load (in addition to the driver) = GVW minus curb weight. The maximum permissible axle load, front or rear, must not be exceeded. The precise curb weight of the vehicle (weight ready for driving + driver à 154 lbs. (70 kg) and load capacity are specified in the vehicle registration documents.

*Chassis number plate in engine bay*

Length of the trunk:

rear seat raised, Coupé- and 5-door car 37.0" (940 mm)

rear seat lowered, Coupé- and 5-door car 67.2" (1705 mm)

Volume of trunk according to SAE:

with parcel shelf, Coupé- and 5-door car 15.9 cu.ft.  
(451 dm<sup>3</sup>)whole rear seat tipped forward,  
Coupé- and 5-door car \_\_\_\_\_ 46.0 cu.ft.  
(1303 dm<sup>3</sup>)Convertible, soft top up \_\_\_\_\_ 12.5 cu.ft.  
(354 dm<sup>3</sup>)Convertible, soft top down \_\_\_\_\_ 10.1 cu.ft.  
(285 dm<sup>3</sup>)

Weight ready for driving (i.e. with full fuel tank, washer- fluid reservoir, standard tools and spare wheel)

Coupé _____	2990-3170 lbs. (1355-1440 kg)
Viggen, Coupé _____	3090-3160 lbs. (1405-1435 kg)
5-door _____	3030-3220 lbs. (1375-1460 kg)
Viggen, 5-door _____	3140-3210 lbs. (1425-1455 kg)
Convertible _____	3130-3260 lbs. (1420-1480 kg)
Viggen, Convertible _____	3220-3230 lbs. (1460-1465 kg)

Gross vehicle weight (GVW)

Coupé _____	3930-4060 lbs. (1785-1840 kg)
Viggen, Coupé _____	4060 lbs. (1840 kg)
5-door _____	3980-4100 lbs. (1805-1860 kg)
Viggen, 5-door _____	4100 lbs. (1860 kg)
Convertible _____	3920-3990 lbs. (1780-1810 kg)
Viggen, Convertible _____	3970 lbs. (1800 kg)
Maximum axle load	
front _____	2300 lbs. (1045 kg)
rear _____	1930 lbs. (875 kg)
Weight distribution:	
Curb weight, front/rear _____	approx. 62/38 %
GVW, front/rear _____	approx. 58/42%

### Maximum permitted load in trunk

Coupé and 5-door at curb weight plus  
4 passengers à 155 lbs. (70 kg) \_\_\_\_\_ 130 lbs.(60 kg)

For each passenger less in the rear seat the load may be  
increased by 100 lbs. (45 kg)

Convertible at curb weight and  
3 passengers à 155 lbs. (70 kg) \_\_\_\_\_ 120 lbs. (55 kg)

Coupé and 5-door at curb weight and  
rear seat right down \_\_\_\_\_ 475 lbs. (215 kg)



### WARNING

- The GVW and maximum axle loads must not be exceeded. Note that if some accessories (e.g. towbar, CD changer) are fitted, the available load capacity is reduced by the weight of these items.
- When goods are being transported their security is important, especially if the car is being used with the rear seat down.

Max. permitted roof load \_\_\_\_\_ 220 lbs. (100 kg)

### Trailer weights:

Trailer with brakes \_\_\_\_\_ Max. 2000 lbs.  
(900 kg)

Trailer without brakes \_\_\_\_\_ Max. 1000 lbs.  
(450 kg)

Recommended towbar-ball load \_\_\_\_\_ 110-165 lbs.  
(50-75 kg)

Maximum towing speed, trailer with  
brakes \_\_\_\_\_ 62 mph (100 km/h)

The above max. weights and speed limit are those which Saab  
Automobile AB permits. Note that the national rules may set lim-  
its to permitted weights and speed; see also page 156.

## Engine

Type _____	4 cyl, 2 overhead camshafts, 16 valves and 2 balancer shafts
Cylinder bores _____	3.54" (90 mm)
Stroke:	
2.0 Turbo _____	3.071" (78 mm)
Viggen _____	3.543" (90 mm)
Swept volume:	
2.0 Turbo _____	121 cu.in. (1,985 dm <sup>3</sup> )
Viggen _____	140 cu.in. (2,290 dm <sup>3</sup> )
Idling speed _____	900 rpm
Antifreeze _____	Saab-approved antifreeze
Coolant volume, cooling system _____	8.7 qts. (8.5 l)

## Engine oil

### Oil grade:

We recommend the use of oils that are available from your Saab dealer, for the regular oil changes.

These oils fulfill the most stringent requirements set by API and ACEA classifications.

Oil for gasoline engines is classified by the API standards (American Petroleum Institute) into the grade classes SH (since 1993) and SJ (since 1996). The SJ class fulfils more stringent requirements and has a lower phosphorous level.

These grade classes are most often combined with the corresponding classes for diesel engines. The class designations for diesel engines begin with the letter "C" (Commercial). For example a grade combination suitable for both types of engine could be API SH/CD or SJ/CF.

Under ACEA nomenclature, oils are divided into Class A for gasoline engines and Class B for diesel-engined passenger cars. There is a further class for heavy diesel engines. Each class is divided into three grades: 1, 2 and 3, where grades 2 and 3 normally encompass semi and fully-synthetic oils.

In the same way as in the API system, gasoline and diesel engine specifications are combined for products that can be used in both types of engine. For example, a grade designation could be ACEA A2/B2 or ACEA A3/B3.

To afford Saab engines the best protection, with regard to lubrication, the ability to dissolve residues and the neutralization of combustion products, we recommend the following oil grades:

- API SH/CD/CF or SJ/CD/CF.
- ACEA A2/B2 or A3/B3.

**These oils contain the additives required for the engine to function well. We advise against the use of further additives.**

*Viscosity:*

The viscosity of oil is classified according to the SAE standard. Nowadays, multigrade oils are always used in cars. The properties of these oils facilitate starting the car in cold weather but mean that the oil is also viscous enough to coat all moving parts under high pressures and with high outside air temperatures. Multigrade oils are graded with two viscosities, e.g. 10W-30, where the 10W meets certain viscosity requirements at -4°F (-20°C), while the 30 fulfills requirements at a temperature of 212°F (100°C).

Basic recommendations for Saab engines:

- **SAE 10W-30 or 10W-40.**

SAE 5W-30 can also be recommended but in which case the oil must be semi or fully-synthetic and fulfil ACEA grade requirements A3/B3.

Oils which are less viscous, such as 0W/-40/50 are becoming more common and may be used. However, the oil must be fully-synthetic, of a well known brand, and fulfil ACEA grade requirements A3/B3.

This viscosity makes starting in cold weather easier.

Oil capacity inc. filter (on changing) \_\_\_\_\_ 4.0 l

**Fuel**

Fuel-tank capacity \_\_\_\_\_ 17 U.S. gal. (64 l)

For optimum performance, we recommend the following:

2.0 Turbo 185 bhp \_\_\_\_\_ 90 AON, unleaded gasoline, minimum 87 AON

2.0 Turbo 205 bhp and Viggen \_\_\_\_\_ 93 AON, unleaded gasoline, minimum 87 AON

## Engine variants

### 2.0 Turbo 185 hp, manual transmission

Rating, EEC at 5500 rpm _____	185 hp (136 kW)
Max. torque (man.), EEC at 2100 rpm ____	194.0 ft.lb (263 Nm)
Compression ratio _____	9.2:1

### 2.0 Turbo 185 hp, automatic transmission

Rating, EEC at 5750 rpm _____	185 hp (136 kW)
Max. torque EEC at 1900 rpm _____	184.4 ft.lb. (250 Nm)
Compression ratio _____	9.2:1

### 2.0 Turbo 205 hp, manual transmission

Rating, EEC, at 5500 rpm _____	205 hp (151 kW)
Max. torque EEC at 2200 rpm _____	209 ft.lb (283 Nm)
Compression ratio _____	9.2:1

### 2.0 Turbo 205 hp, automatic transmission

Rating, EEC, at 5750 rpm _____	205 hp (151 kW)
Max. torque EEC at 1900 rpm _____	184.4 ft.lb (250 Nm)
Compression ratio _____	9.2:1

### 2.3 Turbo 230 hp, manual transmission

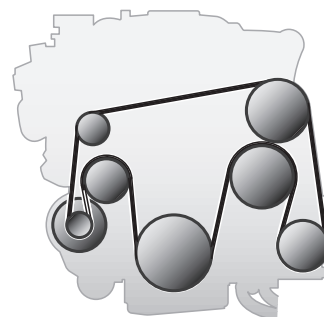
Rating, EEC, at 5500 rpm _____	230 hp (169 kW)
Max. torque EEC at 2500 rpm _____	258.1 ft.lb (350 Nm)
Compression ratio _____	9.3:1

## Electrical system

Voltage _____	12 V
Battery capacity _____	60 Ah
Starter motor _____	1.4 kW
Alternator rating _____	130 A/14 V
Firing order _____	1-3-4-2
Spark plugs:	
2.0 Turbo 185 bhp _____	NGK PFR 7H-10
2.0 Turbo 205 bhp _____	NGK PFR 7H-10
Viggen _____	NGK PFR 7H-10
Electrode gap _____	1.0 mm

## Drive belts

	<u>Outside length</u>
2.0 Turbo and Viggen _____	2345 mm



1B929

Drive belt

**Manual transmission**

Type _____	5-speed, fully synchronized with final-drive gear and differential
Oil type (for topping-up) _____	Saab synthetic manual gearbox oil
Oil capacity _____	1.8 qts. (1.8 l)
Speed (mph/km/h) at 1000 rpm in 5th gear	26/42

**Automatic transmission**

Type _____	Electronically controlled 4-speed with torque converter and differential
Gear selector positions _____	P R N D 3 2 1
Oil quantity, total _____	7.4 qts. (7.2 litres)
Oil volume (on changing) _____	3.4 qts. (3.25 litres)
Oil type _____	Texaco Texamatic Dexron III, mineral oil based
Clutch type _____	Hydraulically-operated plate clutches, brake bands and one-way clutches
Speed (mph/km/h) at 1000 rpm in 4th gear	25/40

**Suspension**

Spring type, front and rear _____	Coil springs
Maximum deflection of springs:	
front, Coupé/5-door/Convertible _____	6.4" (163 mm)
front, Vigen _____	6.5" (165 mm)
rear, Coupé/5-door/Convertible _____	8.3" (212 mm)
rear, Vigen _____	7.9" (200 mm)
Dampers, front and rear _____	Gas-filled telescopic shock absorbers

**Steering**

Steering _____	Power-assisted steering gear of rack-and-pinion type with telescopic, universal joint steering-column shaft
Number of turns, lock to lock _____	3.0
Oil type _____	Power Steering Fluid CHF 11S



## Brake system

Footbrake (ABS) _____	Hydraulic disc brakes with vacuum servo, diagonally split circuits
Parking brake _____	Acts on rear wheels
Brake fluid _____	DOT 4 Do not use DOT 5
Disc diameter:	
front, Coupé/5-door/Convertible _____	11.4" (288 mm)
front, Viggen _____	12.0" (306 mm)
rear _____	11.3" (286 mm)
Total friction area of brake pads:	
front, Coupé/5-door/Convertible _____	34.4 in <sup>2</sup> (224 cm <sup>2</sup> )
front, Viggen _____	35.9 in <sup>2</sup> (234 cm <sup>2</sup> )
rear _____	14.2 in <sup>2</sup> (92 cm <sup>2</sup> )

## Rims and tires

### Rim size:

Coupé/5-door/Convertible _____	6.5 x 15 or 6.5 x 16
Viggen _____	7.5 x 17

**Viggen must use 6.5 x 16 or 7 x 17**

### Tire sizes (summer tires):

6.5 x 15 (not Viggen) _____	195/60 R15
6.5 x 16 _____	205/50 R16
7.5 x 17 Viggen only _____	215/45 R17

### Tire sizes (winter tires):

6 x 15 (not Viggen) _____	185/65 R15 M+S 195/60 R15 M+S
6.5 x 16 _____	205/50 R16 M+S

### Recommended rims for snow chains:

Coupé/5-door/Convertible _____	6 x 15
Viggen _____	6.5 x 16

### Spare wheel:

Tire:	
Coupé/5-door/Convertible _____	T115/70 R15
Viggen _____	T115/70 R16

### Rim:

Coupé/5-door/Convertible _____	4.0 x 15
Viggen _____	4.0 x 16
Maximum life _____	2000 miles (3500 km)
Maximum speed _____	50 mph (80 km/h)

**NOTE****Snow chains**

Snow chains must **not** be fitted to the rear wheels and must be used on the following tire/wheel combinations.

Wheel	Tire
6 x 15 _____	185/65 R15 M+S (not Viggen), 195/60 R15 (not Viggen) or 195/60 R15 M+S (not Viggen)
6.5 x 15 _____	195/60 R15 (not Viggen)
6.5 x 16 _____	205/50 R16 or 205/50 R16 M+S

Max. speed is 30 mph (50 km/h).

Consult your authorized Saab dealer of approved snow chains.

**NOTE**

**Coupé/5-door/Convertible:** Bigger rims than 16" must not be used. The offset of the rims must not exceed 49 mm.

**Viggen:** Bigger rims than 17" must not be used.  
The offset of the rims must not exceed 42 mm.

Front-wheel angles:

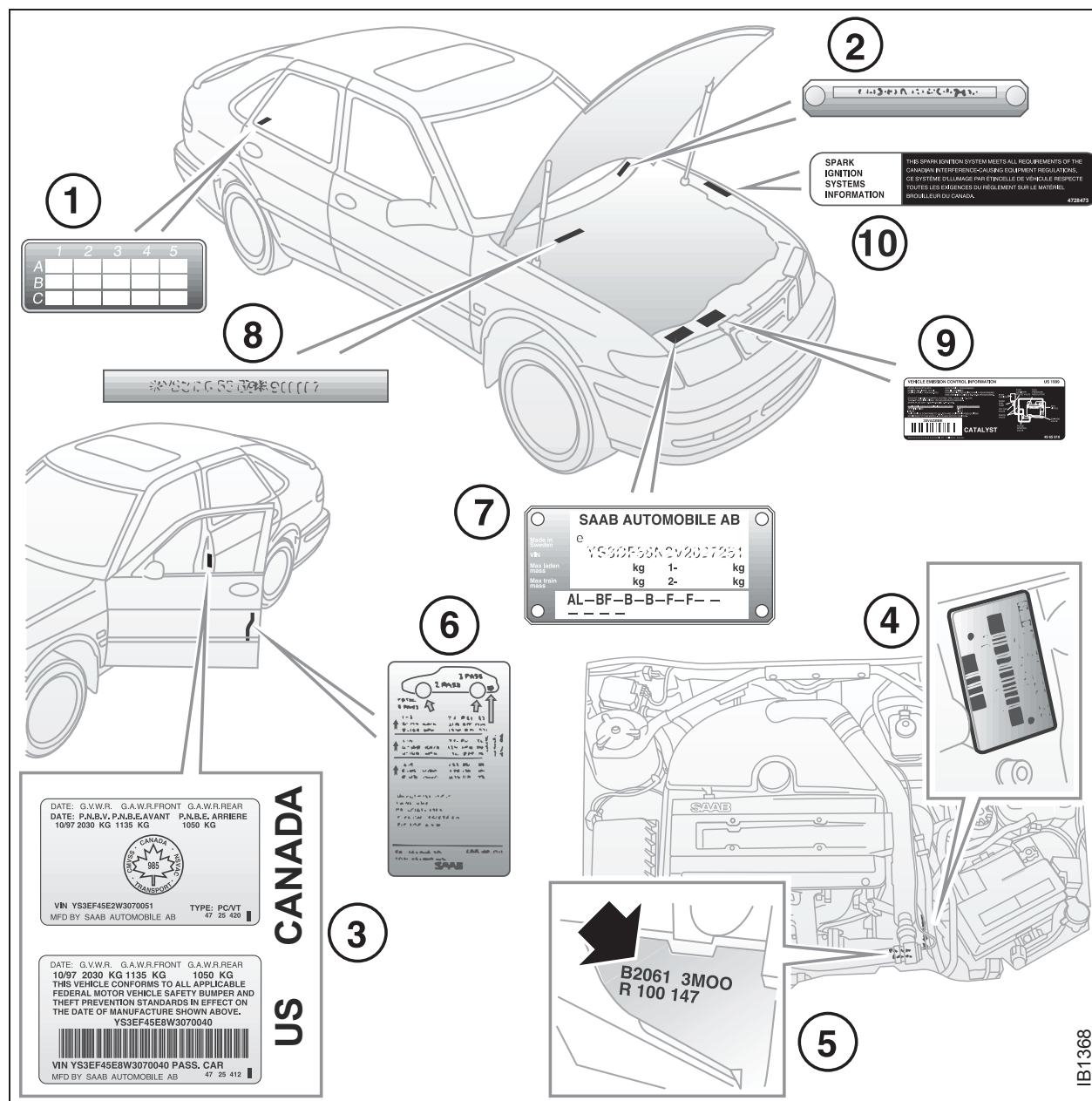
Toe-in, measured on the wheel rim \_\_\_\_\_ 1.5±0.5 mm

Viggen \_\_\_\_\_ 1.3±0.3 mm

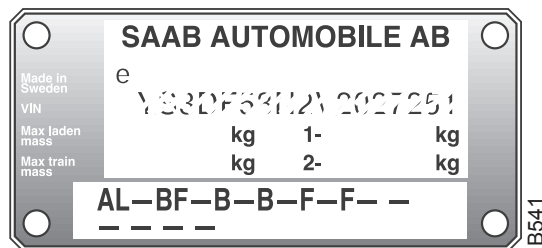
## Plates and labels

In contacts with your Saab dealer it may sometimes be necessary to quote the car's chassis, engine and gearbox numbers.

- 1 Modification identity plate (in the spare wheel compartment). On certain model variants, the plate is located on the right-hand door pillar.
- 2 V.I.N. number inside windshield.
- 3 Certification label.
- 4 Gearbox number.
- 5 Engine number.
- 6 Label for tire pressures and color codes (trim and body).
- 7 Chassis number.
- 8 Chassis number (stamped on body).
- 9 Vehicle Emission Control Information.
- 10 Spark ignition system information (Canada only)



## 230 Technical data



position: 1 2 3 4 5 6 7 8 9 10 11 12

VIN: Y S 3 D F 5 8 K 7 Y 2 005543

| | | | |

1 2 3 4 5 6 = identification codes for certain chassis details

**1 - Region** \_\_\_\_\_ Y = Northern Europe

**2 - Country** \_\_\_\_\_ S = Sweden

**3 - Manufacturer** \_\_\_\_\_ 3 = Saab Automobile AB

**4 - Product line** \_\_\_\_\_ D = 9-3

**5 - Model series** \_\_\_\_\_ D = 9-3 S with driver's and passenger's airbag  
F = 9-3 SE with driver's and passenger's airbag  
P = 9-3 Viggen with driver's and passenger's airbag

**6 - Body version** \_\_\_\_\_ 3 = Coupé (3-door)  
5 = 5-door  
7 = Convertible

**7 - Gearbox** \_\_\_\_\_ 5 = Manual 5-speed  
8 = Automatic 4-speed

**8 - Engine variant** \_\_\_\_\_ G = 2.3 Turbo Viggen  
H = 2.0 Turbo (185 bhp)  
K = 2.0 Turbo (205 bhp)

**9 - Check digit** \_\_\_\_\_ 0-9 or X

**10 - Model year** \_\_\_\_\_ Y = 2000

**11 - Factory** \_\_\_\_\_ 2 = Trollhättan  
7 = Nystad

**12 - Serial number** \_\_\_\_\_ 000001-999999

### Several of the systems in your Saab car may be adjusted to better fit your individual needs

Some functions are governed by legal requirements and cannot therefore be reprogrammed.

Consult an authorized Saab dealer for further information.

#### Car alarm/central locking system:

- The level of the siren when locking/unlocking, HIGH or LOW.
- The number of blinks when locking/unlocking, 1 to 7.
- Automatic locking of the trunk when the car is driven, 1 to 8 mph (2-14 km/h), YES or NO.
- Preclude the unlocking of the trunk while the car is driven, YES or NO.
- Automatic locking of the trunk after 1 second-4 minutes if it has not been opened, YES or NO.
- Automatic locking of the trunk when it is closed, YES or NO.

#### Automatic climate control (ACC):

- Indoor temperature can be increased/decreased relative to the selected temperature.
- Delayed start of fan after starting the car, to reduce risk of fogging windshield.
- Temperature at which the defroster mode is automatically selected.
- Response time for the fan speed when the selected temperature is changed.
- Temperature at which the air distribution switches from defrost mode to defrost/floor mode.
- Last manual selection will be selected the next time the car is started.

#### Saab Information Display (SID):

- Outdoor temperature display can be adjusted.
- Days remaining to next service can be activated/counted or not.
- Delete "Test Brake Light" message on SID at start-up.

#### Miscellaneous:

- Select the on-time for heated rear seat.
- Coolant temperature gauge adjustment can be increased/decreased.
- Fuel level gauge adjustment can be increased/decreased.
- Additional sweep of the wipers after windshield washer function (ON or OFF).
- Follow me home on-time can vary from 20 to 50 seconds.
- Night panel illumination deactivation speed for the speedometer can be adjusted.

**Following adjustments can be done by the driver:**

**Automatic Climate Control (ACC):**

To alter the preprogrammed "AUTO" start up mode with your own preferences you can manually select the desired settings for:

- Temperature.
- Fan speed.
- Air distribution.

See "Programming I" on page 86 and "Programming II" on page 87.

**Saab 9-3 Audio System:**

The following functions can be adjusted by the driver (see page 104):

- Maximum starting volume (when the radio is switched on).
- Telephone volume (if the car is equipped with a phone connected to the audio system).
- Speed dependent volume (volume increases or decreases with vehicle speed).
- Loudness.

**Alarm System:**

The glass breakage sensor can be temporarily disabled, see page 36.

**Daytime Running Lights:**

To disable, turn off the ignition and pull out fuse 15, see page 189.