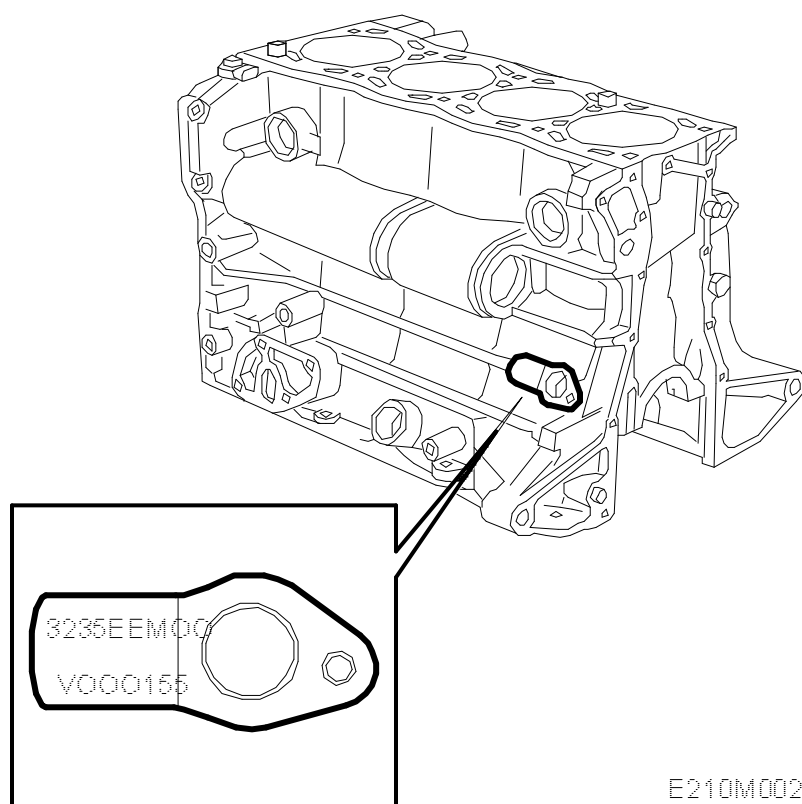


Engine serial No.**Engine number location**

Example: B 23 4 I3 M 00 X000001

Pos. 1**Engine type**

B = Petrol engine

Pos 2-3**Swept volume**

20=1.985 l

23=2.290 l

Pos. 4**Cylinder head**

4=in-line 4-cylinder block with 2 balancer shafts and cylinder head with twin camshafts operating 4 valves per cylinder.

5=in-line 4-cylinder block with 2 balancer shafts and cylinder head with twin camshafts operating 4 valves per cylinder.

Ecopower / Low-friction engine (gen 4)

Pos. 5	Version
	I=Fuel injection
	E=Turbocharged engine with charge air cooler, low-pressure turbo
	L=Turbocharged engine with charge air cooler. Stage 1
	R=Turbocharged engine with charge air cooler. Stage 2.
Pos. 6	Car compliance
	1=Saab 9-3 with exhaust emission control ECE-R15/04
	3=Saab 9-3 with exhaust emission control fulfilling European requirements in accordance with 91/441/EEC, Swedish requirements in accordance with A12 environment class 3 and US CFR 40 part 86
	5=Saab 9-3 with exhaust emission control fulfilling requirements in accordance with State of California Administration Code Title 13, Swedish requirements in accordance with A14 environment class 2 and US CFR 40 part 86
	7=Saab 9-3 with exhaust emission control fulfilling requirements in accordance with US/ CARB TLEV and Swedish requirements in accordance with A14 environment class 1
Pos. 7	Gearbox type
	A = Automatic transmission
	M = Manual gearbox.
Pos 8-9	Variant
	00=Basic
Pos. 10	Model year according to ISO 3779
	X = 1999
Pos. 11-16	Serial number