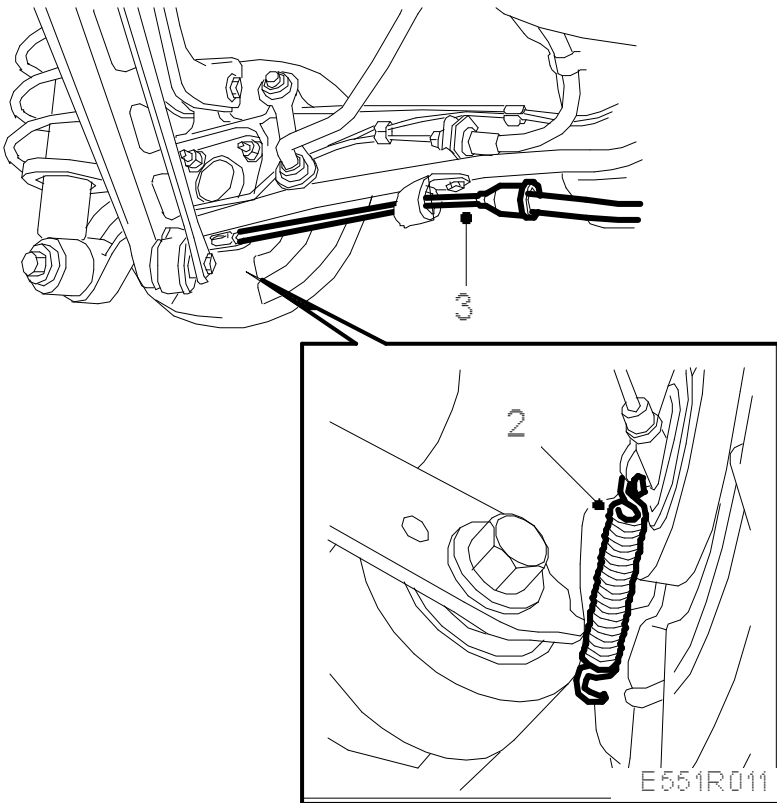


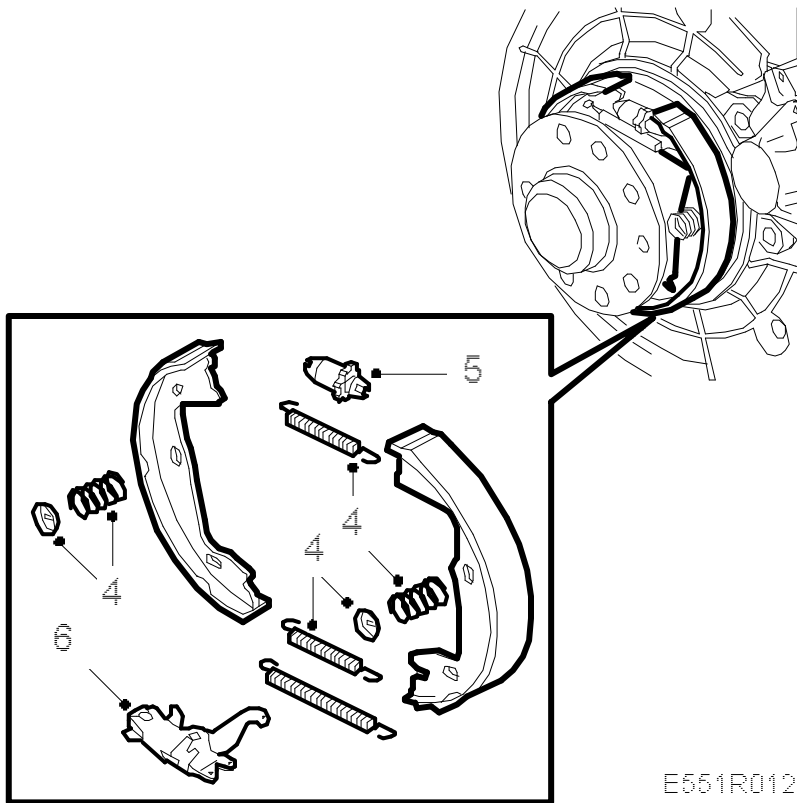
Handbrake shoes**To remove**

1. Remove the brake disc. Swinging caliper, see Adjustment/replacement, "Brake disc, rear wheel, swinging caliper, (15)". Fixed caliper, see Adjustment/replacement, "Brake disc, rear wheel, fixed caliper, (17)".



2. Remove the return spring.
3. Unhook the cable from the actuating lever.
- 4.

Remove the inner return springs, using tool 89 95 607, and the retaining pins using tool 89 96 647.

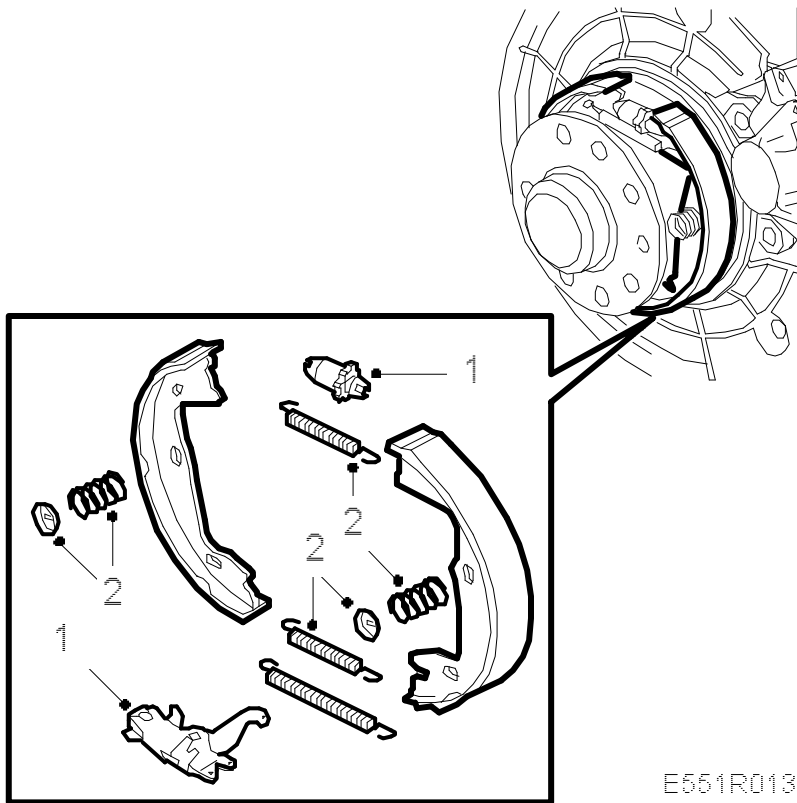


5. Remove the brake shoes and adjusting unit.
6. Inspect the actuating levers and adjusting unit for wear and fit replacements as necessary.

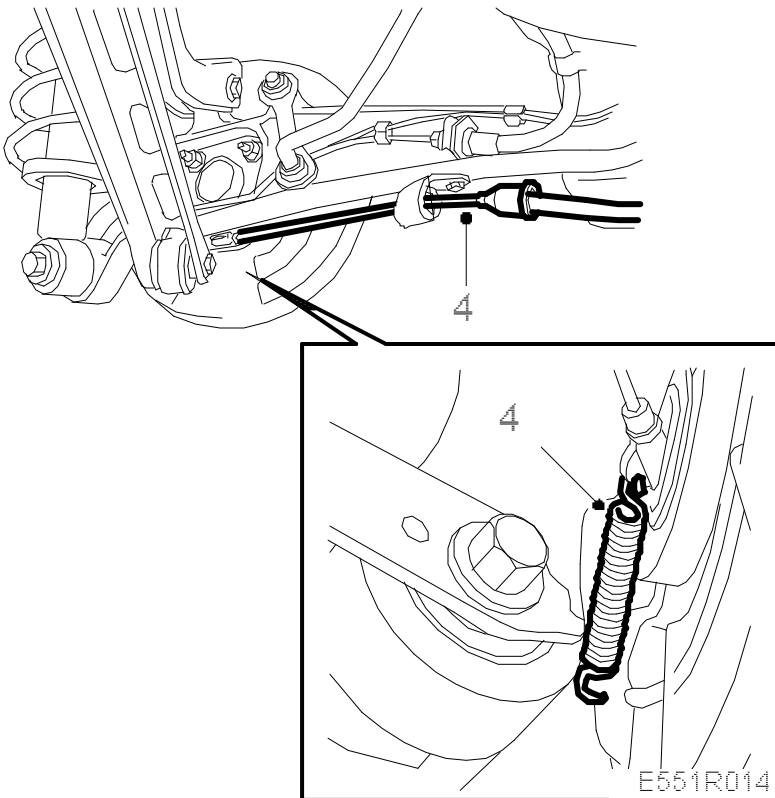
To fit

- 1.

Position the brake shoes, actuating lever and adjusting unit on the backplate.



2. Fit the springs for the retaining pins, using tool 89 96 647, and the return springs using tool 89 95 607.
3. Fit the brake disc. Swinging caliper, see Adjustment/replacement, "Brake disc, rear wheel, swinging caliper, (15)". Fixed caliper, see Adjustment/replacement, "Brake disc, rear wheel, fixed caliper, (17)".
4. Hook the cable in place and fit the return spring.



5. Adjust the handbrake, see ➡.
6. Fit the rear wheels, see [Wheels](#).

Tightening torques**aluminium wheel 110 Nm (81 lbf ft)****steel wheel 50 Nm +2x90°, max. 110 Nm (37 lbf ft +2x90°, max. 81 lbf ft)**

7. Lower the car to the floor and depress the brake pedal to force out the brake pistons.
8. Adjust the brake fluid level.
9. Drive the car on test and check the operation of the brakes.