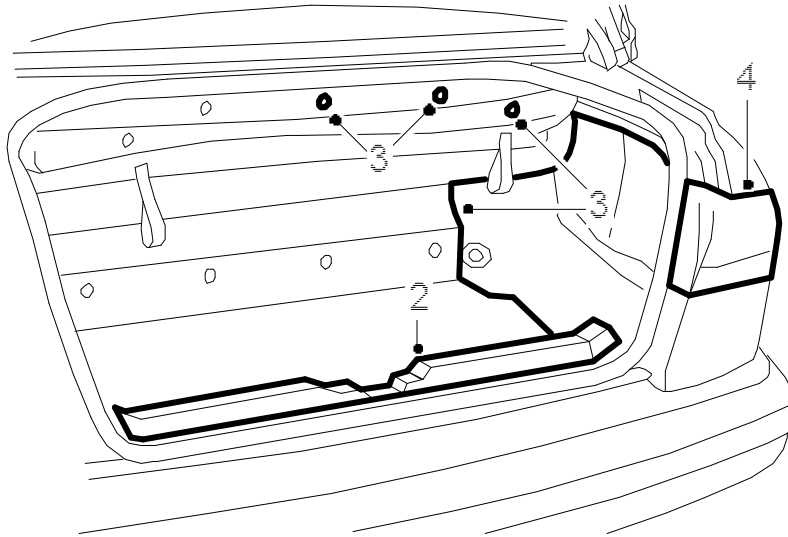


Soft top cover drive mechanism

Removing

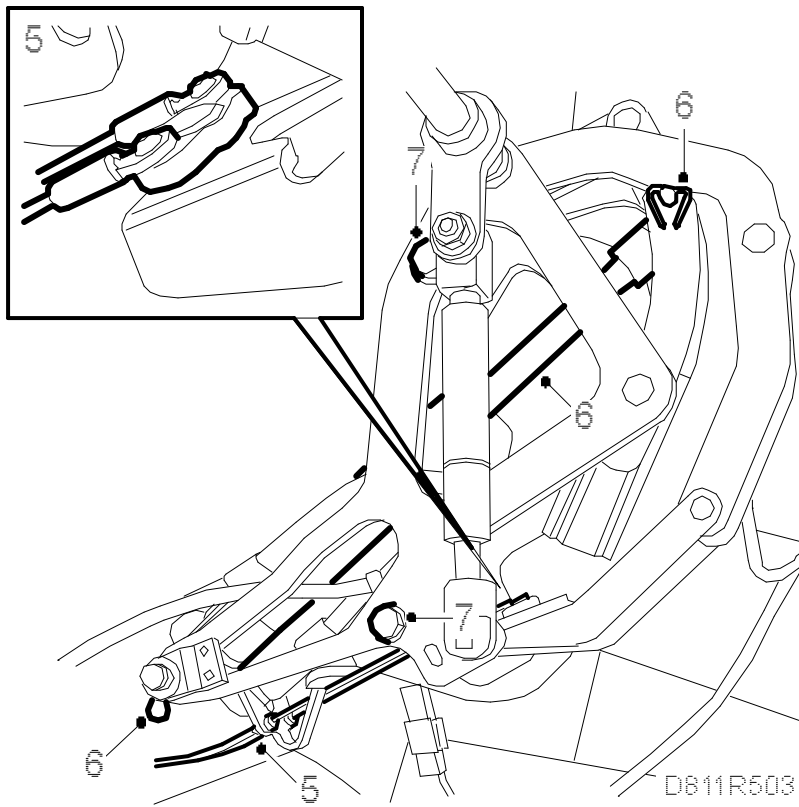
1. Run the soft top to closed position with the fifth bow raised and the soft top cover lowered but not locked.



D811R502

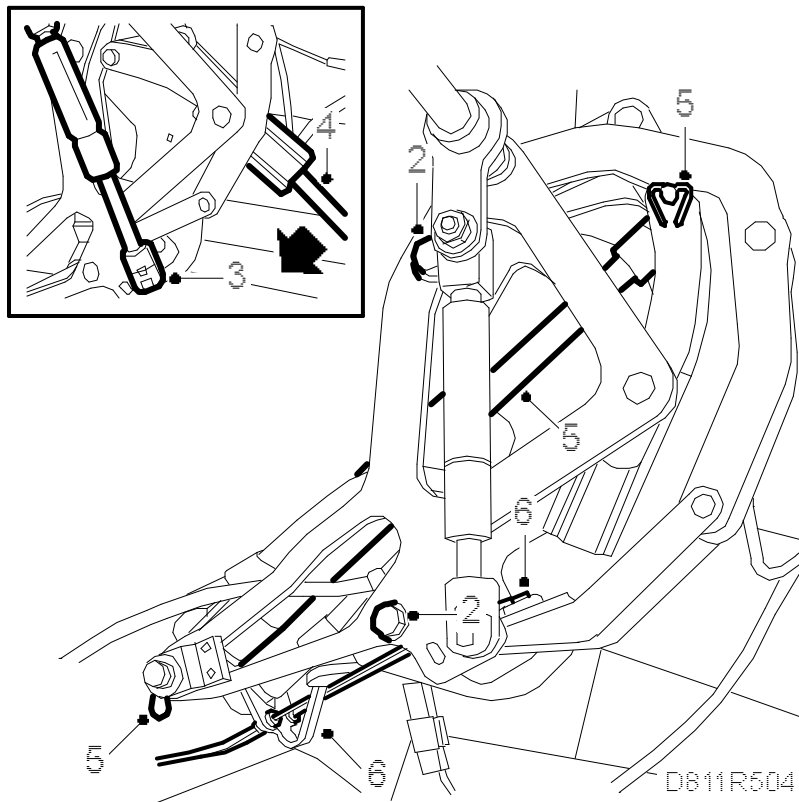
2. Open the boot lid and remove the scuff plate.
3. Remove the luggage compartment upholstery on the right side and fold it aside.
4. Remove the right light cluster for easier access to the drive mechanism.
- 5.

Loosen the nuts that secure the cables for the mechanism and remove the clips.



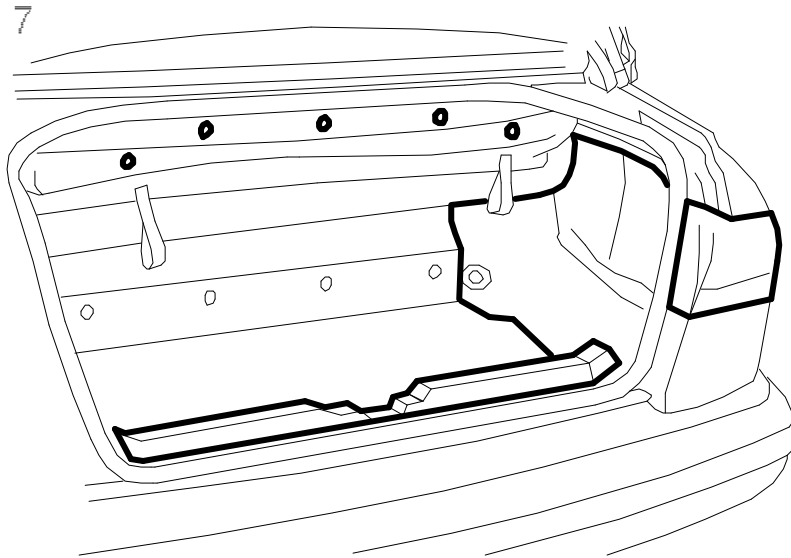
6. Remove the clips and stub axles that secure the cylinder. Lift away the cylinder and lay it at the front of the luggage compartment.
7. Remove the bolts that secure the mechanism and lift away the mechanism.

Fitting



1. Unhook the gas spring's lower mounting.
2. Fit the mechanism and tighten the bolts.
3. Fit the gas spring to its lower mounting.
4. Use an extension and press back the mechanism and gas spring to the correct position so that the cylinder can be fitted.
5. Fit the cylinder and fit the stub axles and clips.
6. Fit the cables.
- 7.

Fit the light cluster as well as the luggage compartment upholstery and the scuff plate.



D811R505