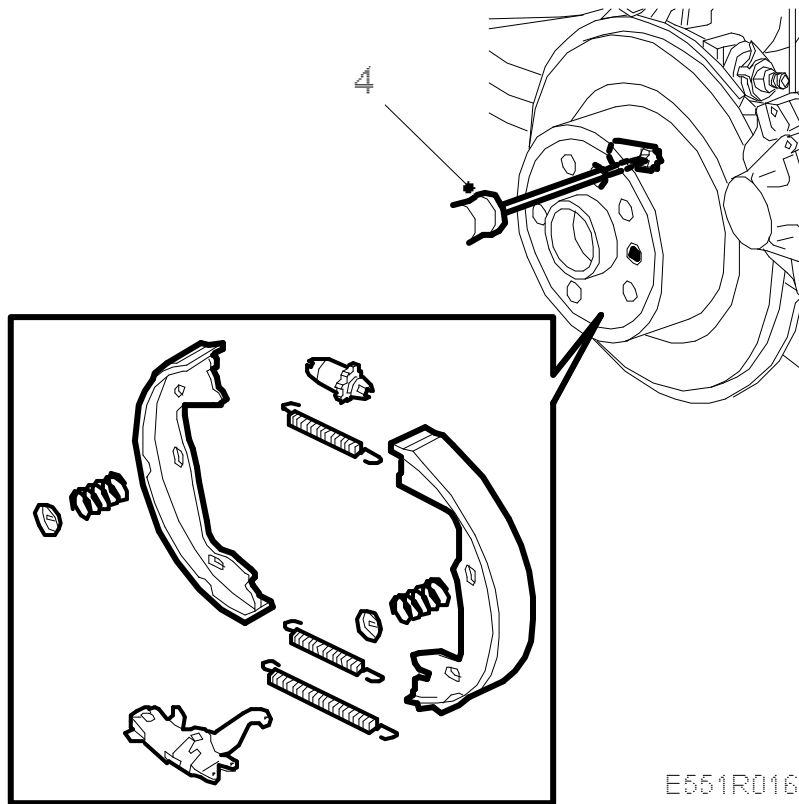


Adjusting the handbrake shoes

Check the lever travel. If the wheels do not lock on the 4th notch, the handbrake must be adjusted.

1. Release the handbrake.



2. Check that the cable is not pulling the actuating levers. If necessary, slacken the cable adjusting nut.
3. Using a screwdriver, unscrew the adjuster until the brake disc is blocked.
4. Then, unscrew the adjuster until the brake disc can be turned.
5. Repeat the procedure on the other wheel.
6. Fit the wheels, see [Wheels](#).

Tightening torques

aluminium wheel 110 Nm (81 lbf ft)

steel wheel 50 Nm +2x90°, max. 110 Nm (37 lbf ft +2x90°, max. 81 lbf ft)

Important

The wheel must hang freely when the wheel bolts are being tightened.

7. Adjust the handbrake cable, refer to [Adjusting the handbrake cable](#).

