

Checking/filling oil

Checking oil level

The oil quantity in the system is 0.55 l and between the MAX- and MIN-markings, the volume is 65 ml. Always use oil part No. (16) 30 32 356.

Important

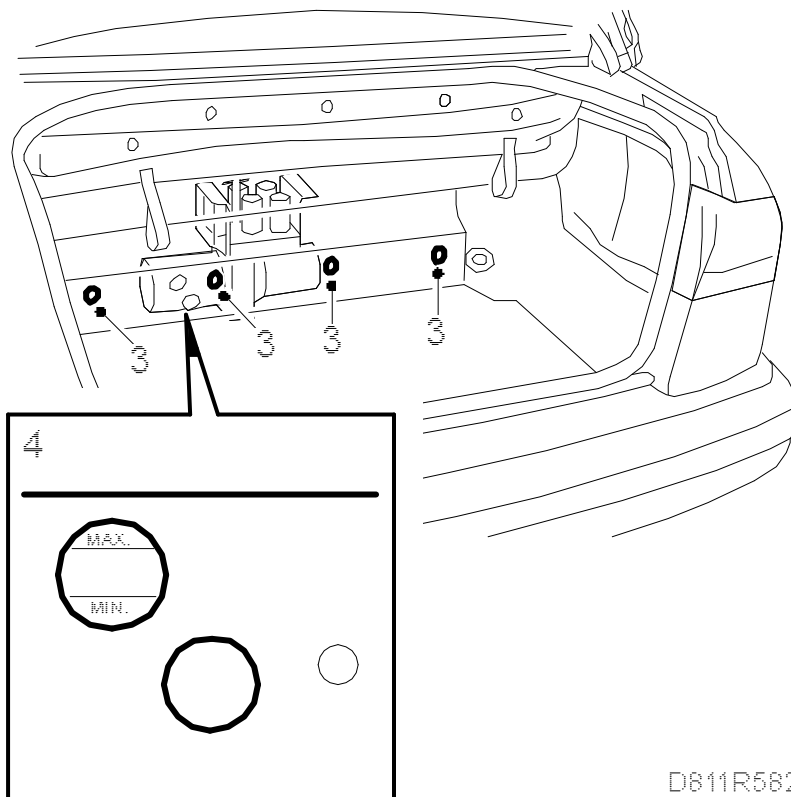
Never use the same oil as in the Saab 900 Cabriolet - M94.

1. Manoeuvre the soft top to the lowered position (open).

Note

The fluid level can be checked when the soft top is raised (closed). In this case, the level can be a few millimetres below the MIN mark even if there is a sufficient amount of fluid present.

2. Open the boot lid.
3. Remove the plastic clips.



D811R582

4. Use a flashlight to illuminate the lower hole at the same time as you look into the upper hole and check the fluid level in the reservoir. The fluid level should lie between the MAX and MIN markings. If necessary, top up using the method described below.

Note

The fluid level can be checked when the soft top is raised (closed). In this case, the level can be a few millimetres below the MIN mark even if there is a sufficient amount of fluid present.

5. Fit the plastic clips.

Filling oil

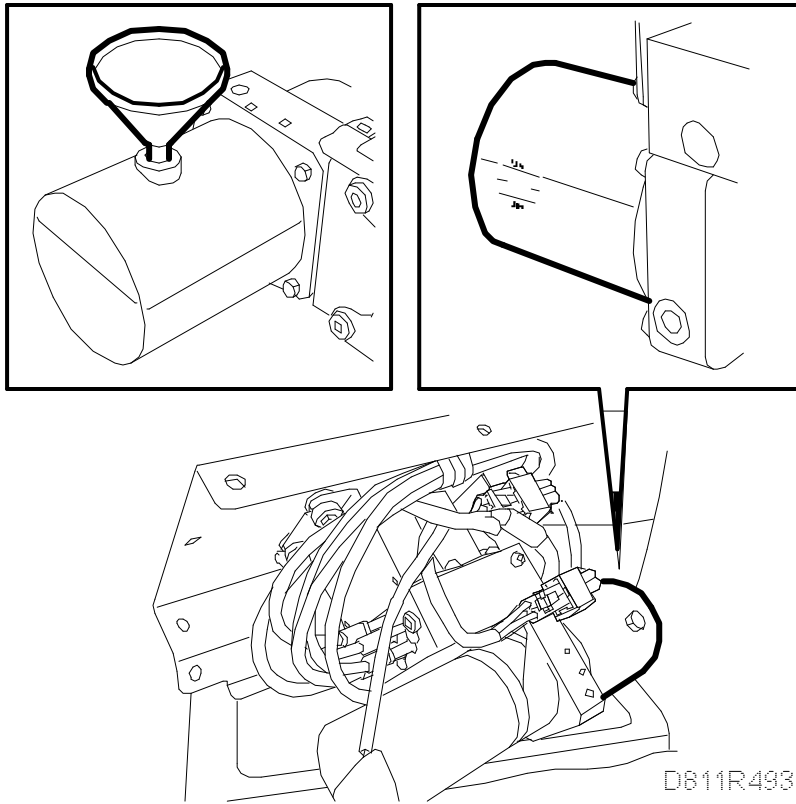
The oil quantity in the system is 0.55 l and between the MAX- and MIN-markings, the volume is 65 ml. Always use oil part No. (16) 30 32 356.

Important

Never use the same oil as in the Saab 900 Cabriolet - M94.

1. Operate the soft top to raised (closed) position.
2. Fold forward the rear backrest.
3. Remove the cover over the hydraulic unit.
- 4.

Remove the hydraulic unit retaining bolts and lift up the hydraulic unit.



5. Remove the filler plug from the oil reservoir. Use a funnel when filling oil.
6. Lower the hydraulic unit into the torsion box and fit the bolts.
7. Fit the cover and restore the backrest to upright position.