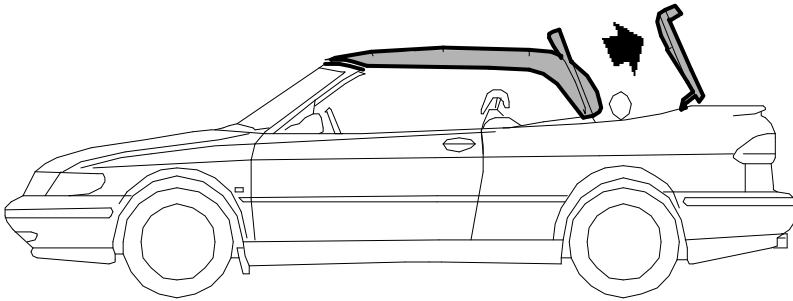


## Bleeding the hydraulic system

### Bleeding

1. Check the oil level. See [Checking/filling oil](#).
2. Operate the soft top so that the soft top cover and fifth bow are fully raised.

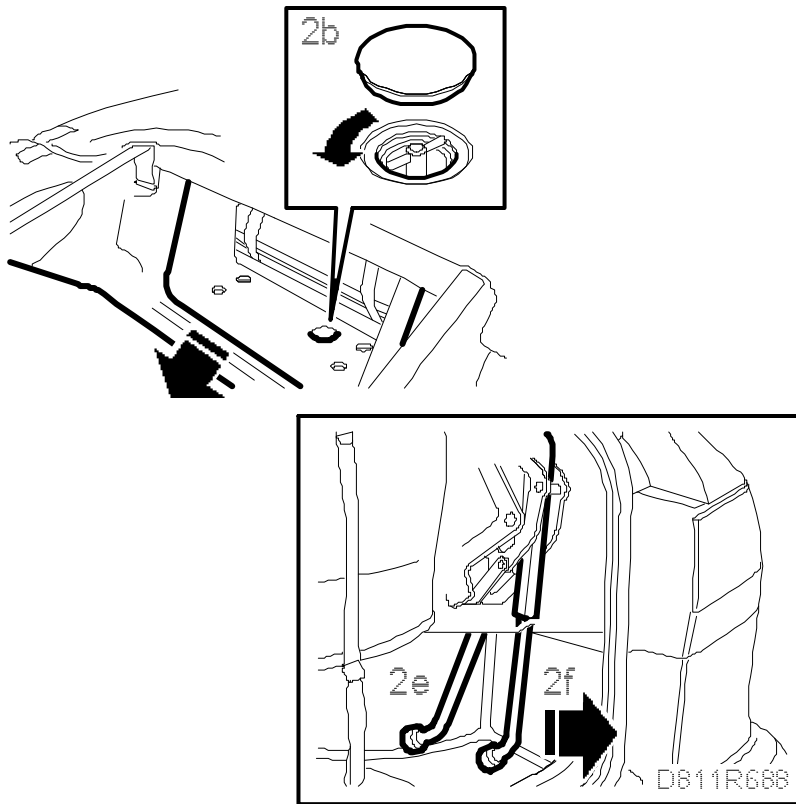


D811R511

If it is not possible to operate the soft top via the electric controls proceed as follows:

2.a.

Release the rear seat backrest and fold it forward.



- 2.b. Remove the cover over the emergency valve and open the valve about a half turn.
- 2.c. Unlock the soft top from the windscreen frame.
- 2.d. Activate the fifth bow lock using the diagnostic tool set to UNLOCK and fold up the fifth bow.
- 2.e. Insert the wheel bolt tool through the opening in the right-hand luggage compartment trim and attach it in the drive mechanism link arm.
- 2.f. Unlock the soft top cover by pulling the tool backwards until the soft top cover lifts a few centimetres.
- 2.g. Remove the tool, close the boot lid and open the soft top cover.
3. Use a rag to protect the hose on the upper connection of the fifth bow cylinder on the left-hand side of the car.
4. Undo the upper connection on the fifth bow cylinder on the left-hand side of the car.

Does oil run from the hose?

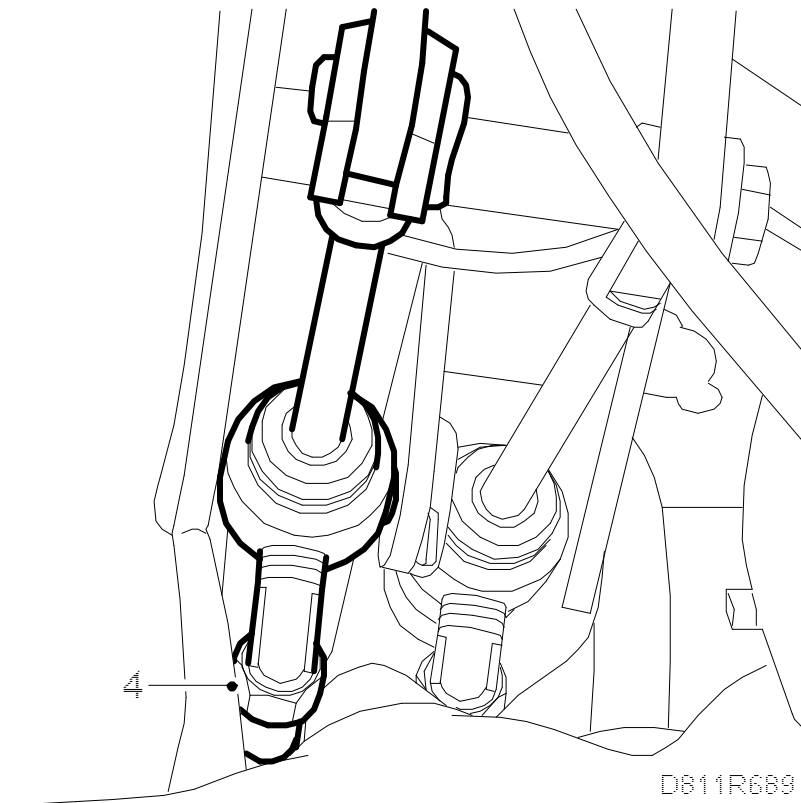
**YES**

The hydraulic system is correct if there are no air bubbles. Connect the hose to the

cylinder and make sure it is properly tightened. Continue with step 11.

## NO

The connection should be left open so that the hose end is visible for about 5 minutes (the system will slowly take in air). Then continue to step 5.



5. Connect the hose and make sure it is tightened securely.
6. Operate the soft top for one complete cycle to its lowered (open) position and then up (closed) again.
7. Check the hose to make sure there are no oil leaks.
8. Wait for one minute so that oil and air has time to separate in the reservoir.
9. Operate the soft top through an additional full cycle.
10. Allow the car to stand for at least 2 hours.

---

### Important

The car may be moved (driven); soft top operation is strictly forbidden.

- 
11. Operate the soft top through 2 complete cycles; listen for noise and look for halting movements in the soft top caused by air in the system.

Is the soft-top functioning correctly?

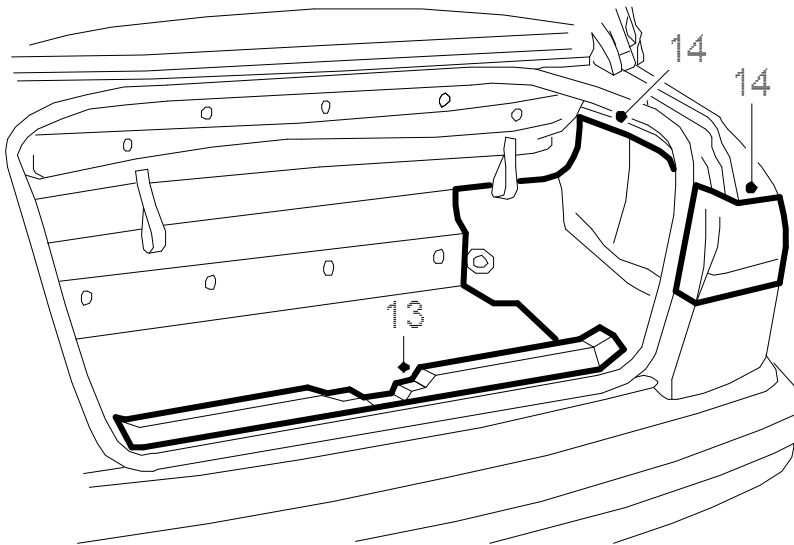
**YES**

The car is OK.

**NO**

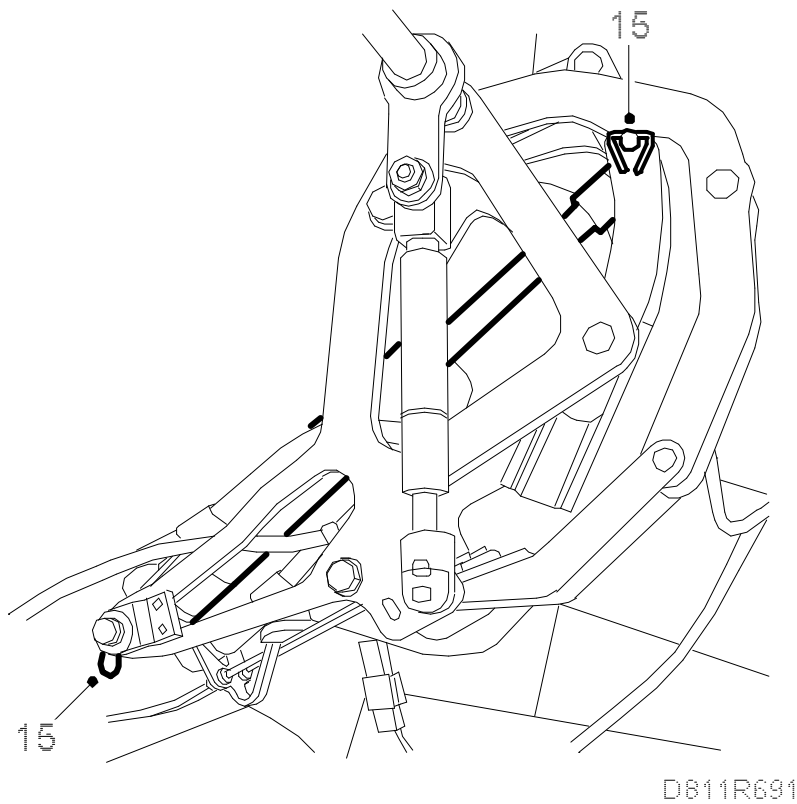
Continue to step 12.

12. Manoeuvre the soft top so that the fifth bow is open and the soft top cover is closed but not locked.
13. Open the boot lid and remove the scuff plate cover.



DB11R690

14. Loosen the right-hand side trim in the luggage compartment and fold it aside. Remove the right-hand rear light.
15. Remove the clips and pins for the soft top cover cylinder. Remove the cylinder. Do not unplug the cylinder connection.

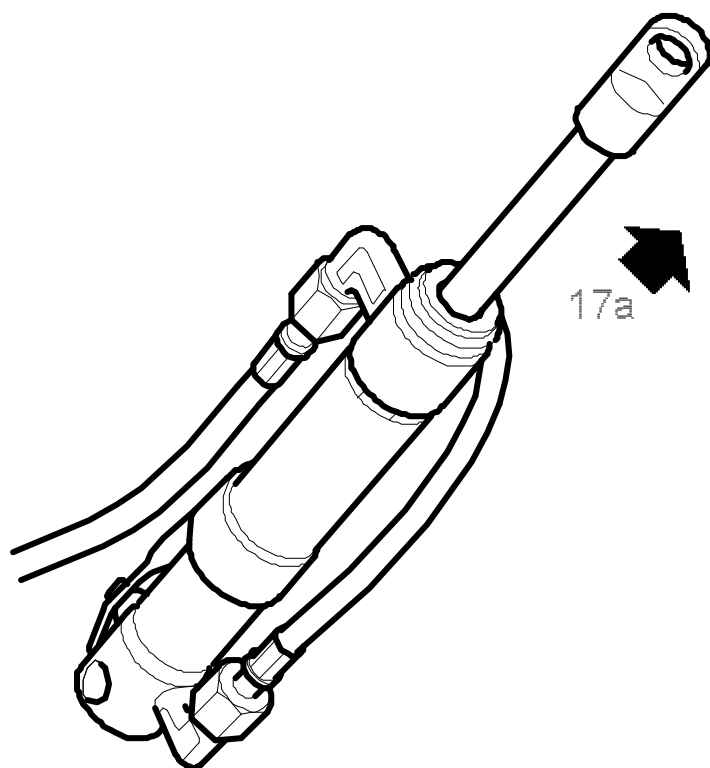


16. Insert a hand lamp through the rear light cluster hole and close the boot lid.
17. This step requires 2 people; one manoeuvres the soft top so that the soft top cover cylinder is moving while the other holds the cylinder through the rear light cluster hole.

Turn the cylinder so that the return air hose is always facing upwards regardless of the cylinder position:

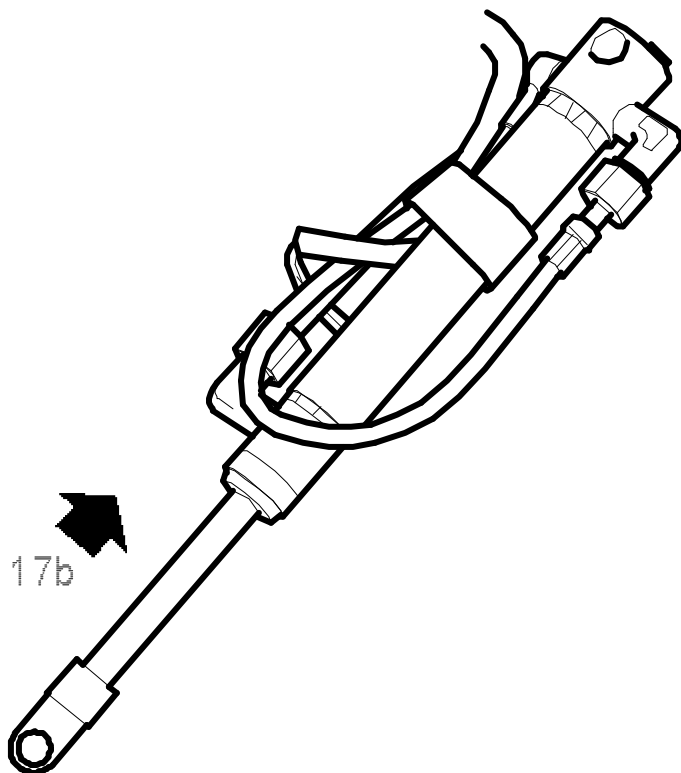
17.a.

When the piston presses out, the piston end should be pointing up.



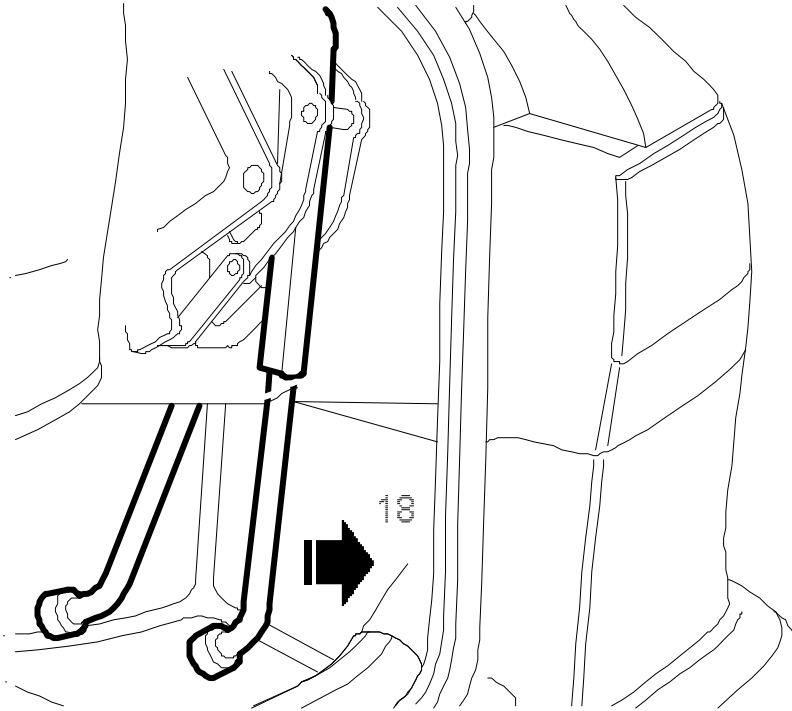
D811R692

17.b. When the piston retracts, the piston end should be facing down.



D811R693

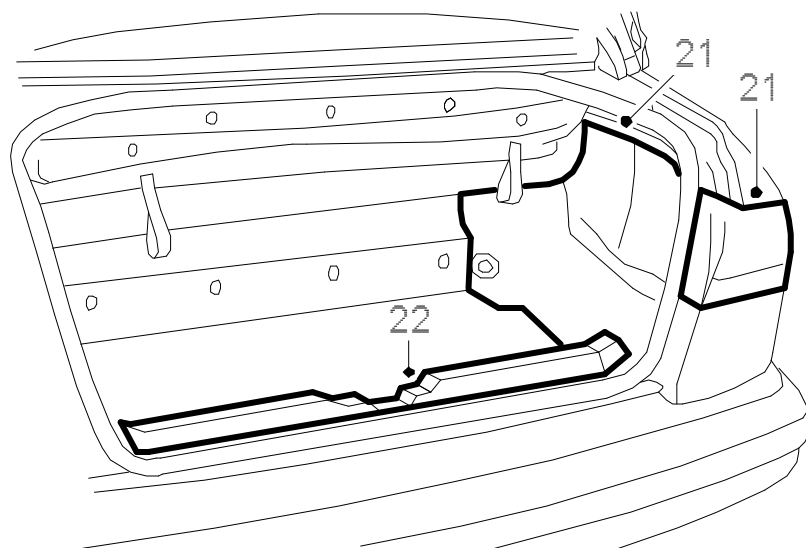
- 17.c. Operate through at least 10 cycles.
18. Use the wheel bolt tool when pressing the soft top cover cylinder back. Fit the upper pin and clip first. Check that the pins and clips are properly secured.



D811R694

19. Manoeuvre the soft top through at least 5 complete cycles in order to check soft top function.
20. Open the boot lid. Check the fluid level, see [Checking/filling oil](#).
- 21.

Fit the luggage compartment trim and rear light.



D811R695

22. Fit the scuff plate cover.