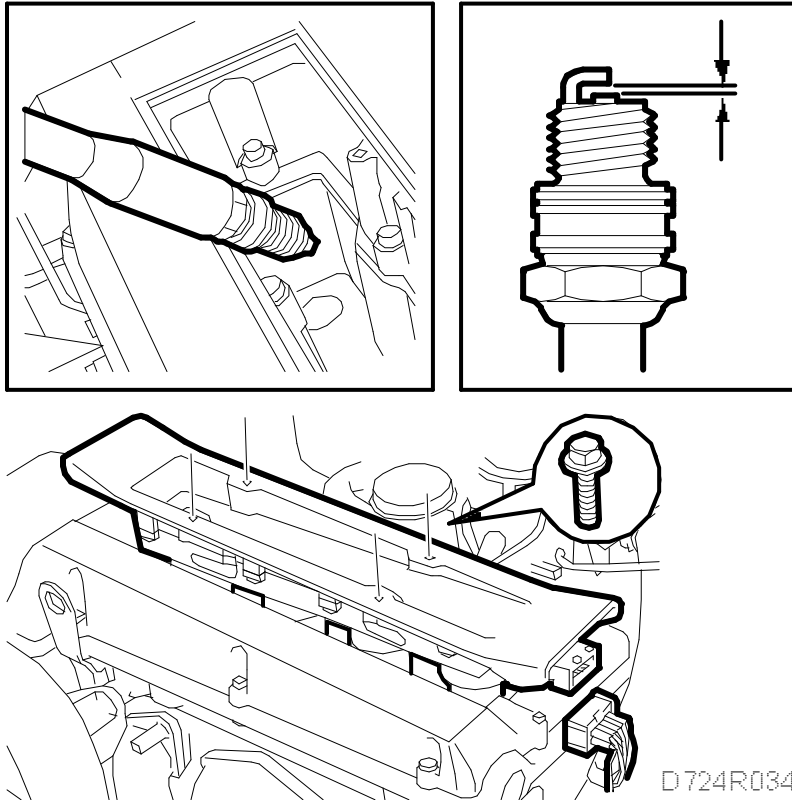


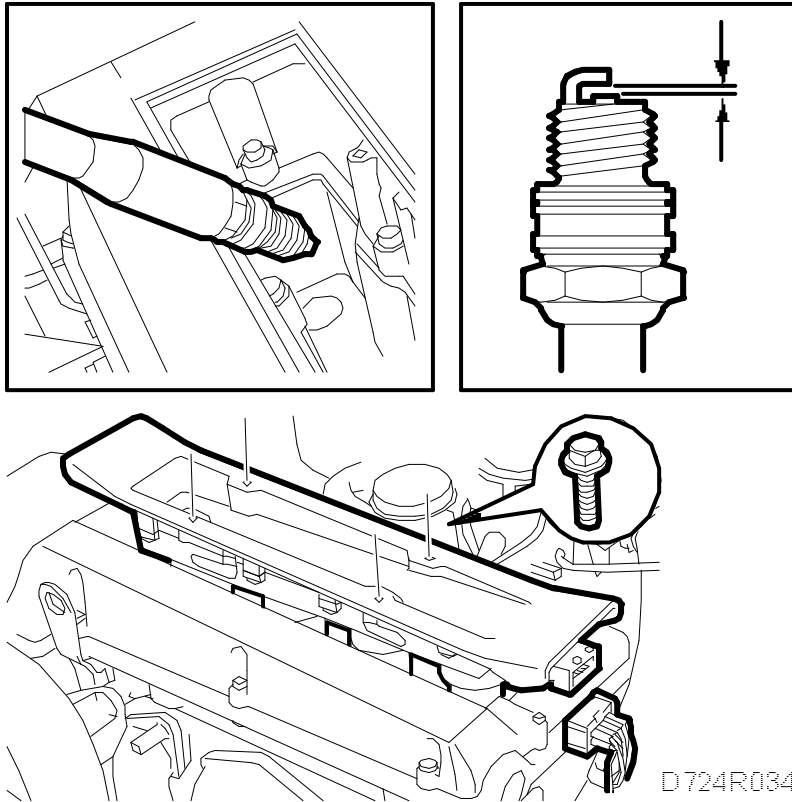
Changing spark plugs

To remove



1. Unplug the 10-pin DI module connector.
2. Undo the 4 DI module bolts.
3. Remove the spark plugs.
4. Check the electrode gap on the spark plugs and adjust if necessary.

To fit



1. Fit the spark plugs

Tightening torque: 27 Nm (20 lbf ft)

2. Fit the ignition discharge module. Tighten the screws.

Tightening torque: 11 Nm (8 lbf ft)

3. Plug in the ignition discharge module connector.