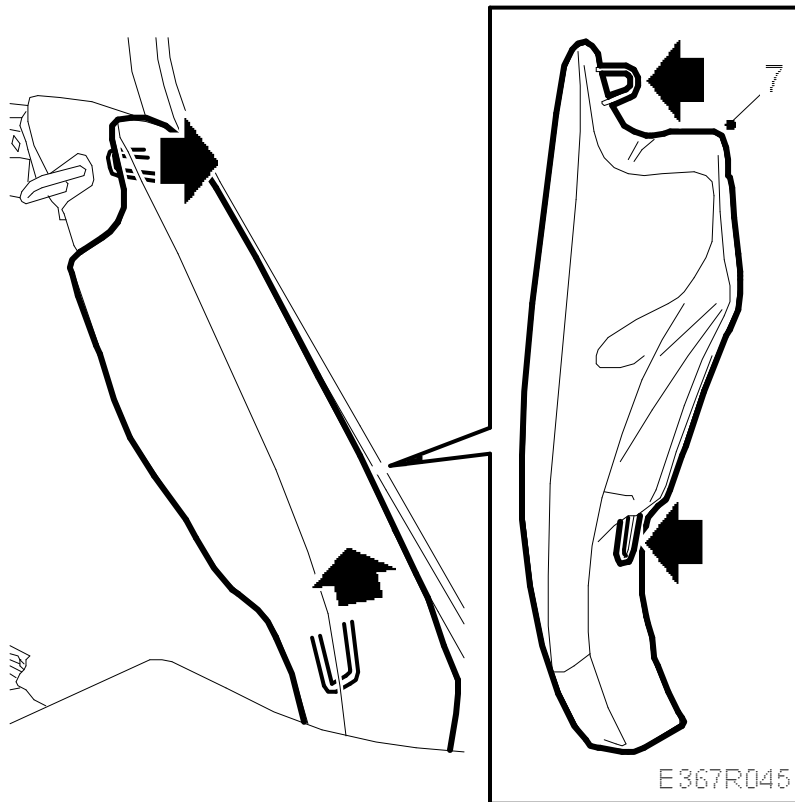
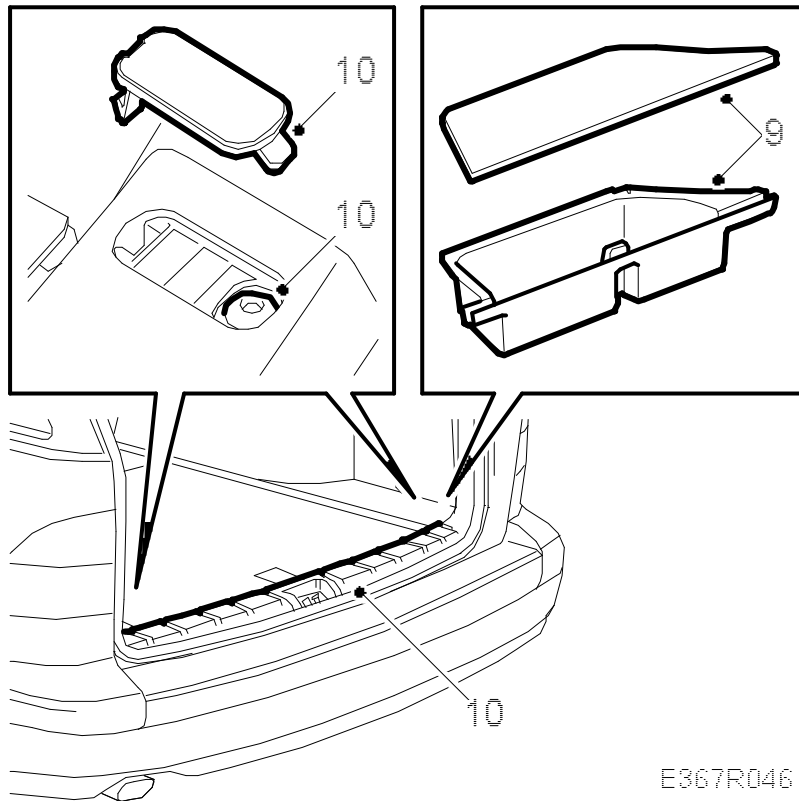


CD changer, option (5D)**To remove**

1. Connect Tech 2.
2. Establish communication with the CD changer (CDC).
3. Select " Programming " in the system menu.
The message " Marriage/Divorce " is displayed.
4. Press " Enter Key ".
5. Select "DIVORCED" with the change button and press " OK ".
- " DIVORCED " must be selected when removing the CD changer (to be installed in another car or to be returned for warranty repair).
6. The sound should now cease and "CDC CODE" be displayed on SID.
7. Fold down the left-hand rear seat backrest and remove the side bolster.
8. Lift out the concealing panel.

9. Remove the left-hand storage compartment in the floor.

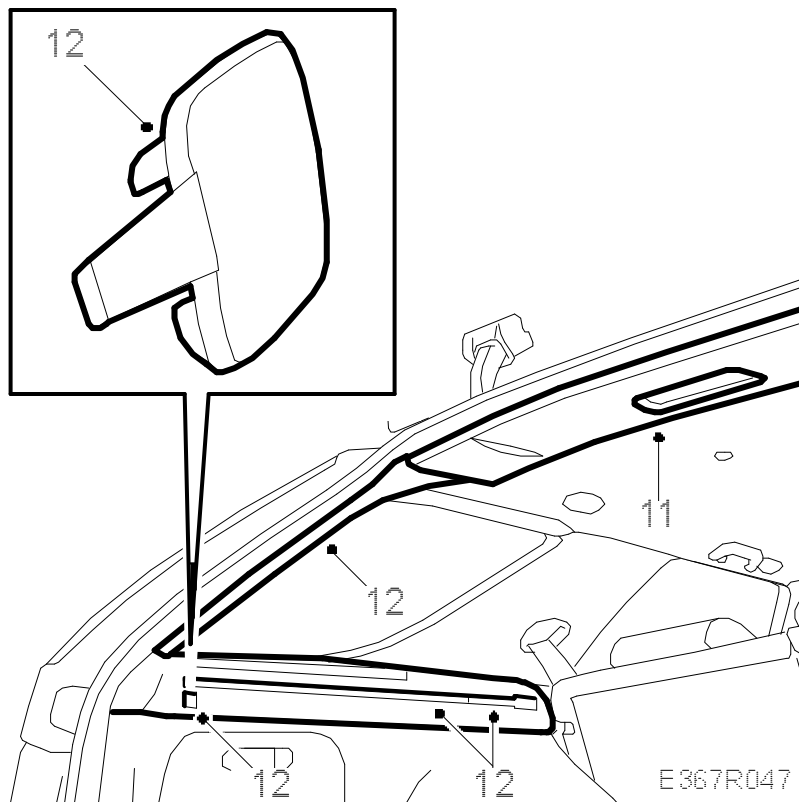


E367R046

10. Remove the scuff plate by first removing the covers on the right and left-hand sides. Undo the screws securing the scuff plate to the sill. Pull off the scuff plate, it is fastened with clips.

- 11.

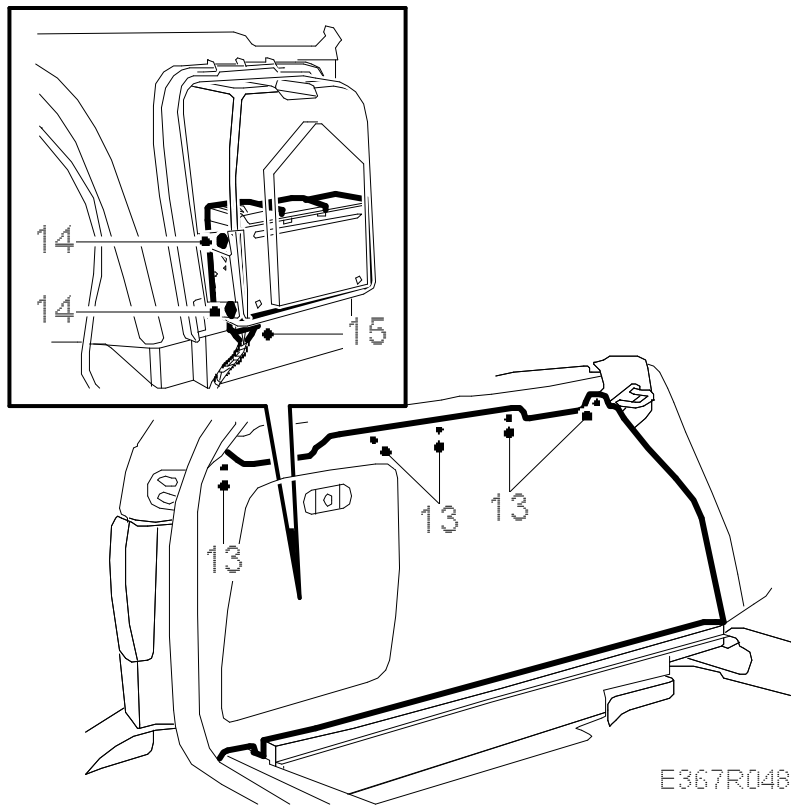
Remove the rear roof cover and unplug the connections for the lighting.



12. Remove the left-hand D-pillar trim and the left-hand concealing panel support (3 screws).

13.

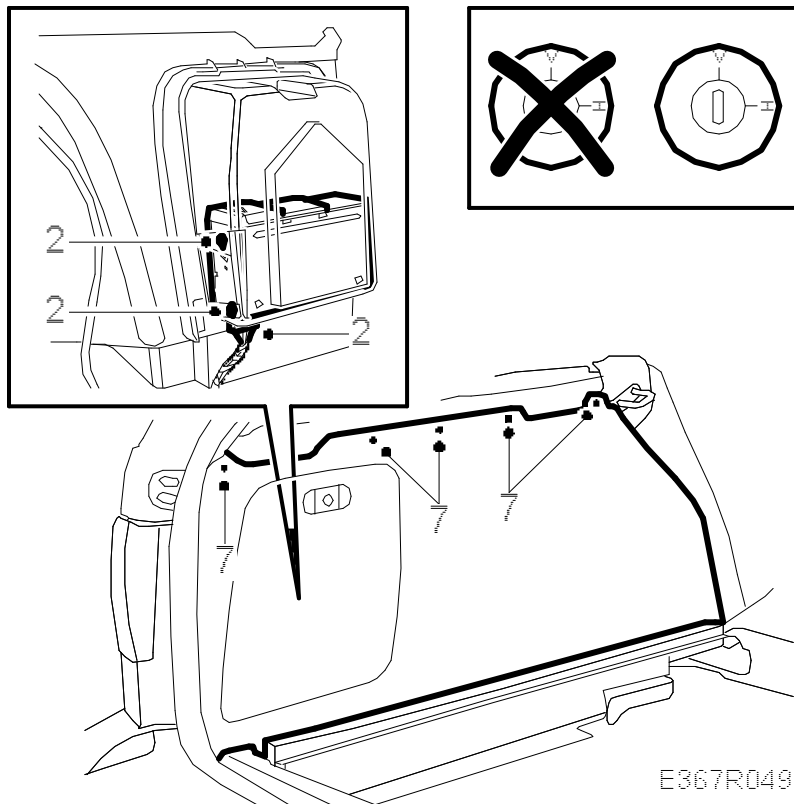
Remove the five screws in the top of the left-hand side trim and lift out the trim.



14. Remove the four screws and washers securing the CD changer.

15. Unplug the connector.

To fit



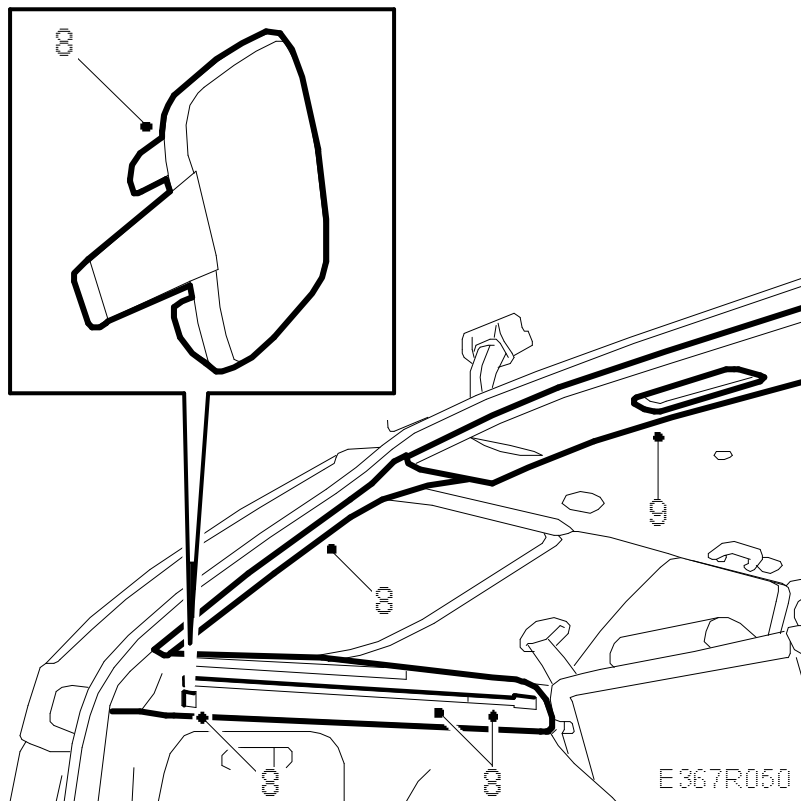
1. Remove 4x transit screws (2 marked red on each side) from the new CD changer.
2. Fit the CD changer with the four screws and washers, plug in the connector. Fit the CD magazine.

Important

Check that the vertical/horizontal setting on the short side of the CD changer is in the vertical (V) position.

3. While Tech 2 is still connected and communicating, select " Programming " in the system menu.
The message " Marriage/Divorce " is displayed.
4. Press " Enter Key ".
5. Select "MARRIED" with the change button and press " OK ".
- " MARRIED " must be selected when installing a CD changer into a Saab 9-5.
6. "CDC CODE" disappears from SID and the sound returns.
7. Position the side trim and tighten the four screws.

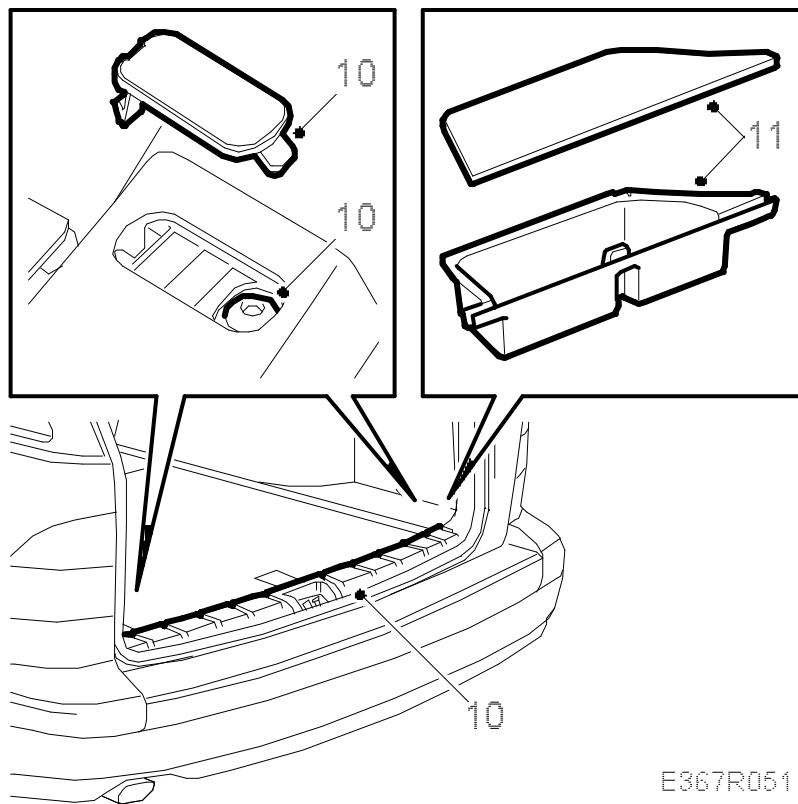
8. Refit the concealing panel support (3 screws) and the D-pillar trim.



9. Plug in the lighting and press on the rear roof cover.

10.

Press in the scuff plate clips and screw on the scuff plate. Fit the covers over the screws and position the sealing strip over the scuff plate.



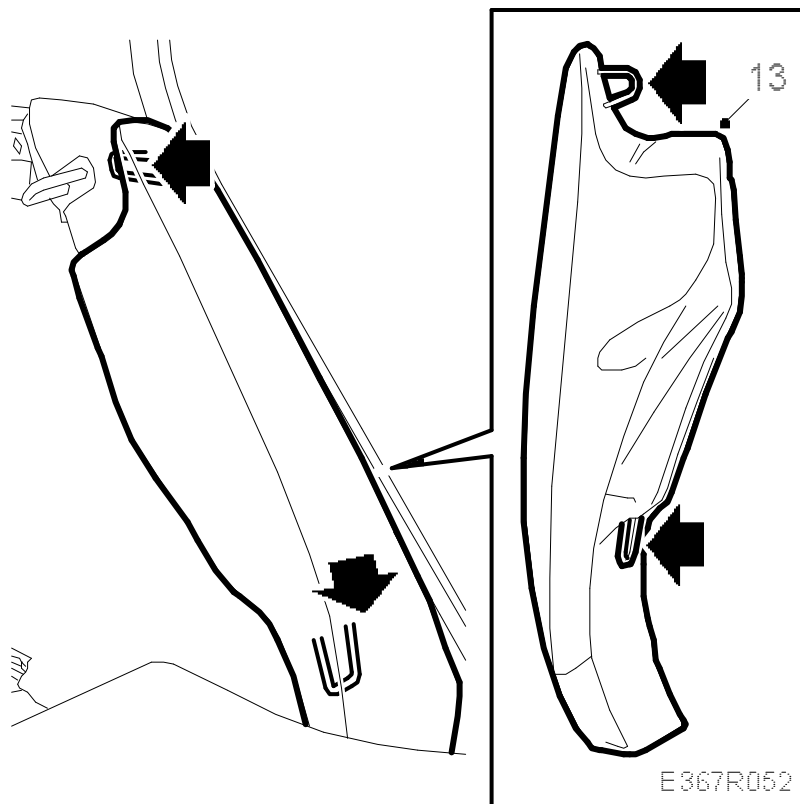
E367R051

11. Fit the storage compartment in the floor.

12. Lift in the concealing panel.

13.

Fit the side bolster between the rear left door and the backrest and fold up the rear seat backrest.

**Warning****The CD changer is a Class 1 laser product**

- The CD changer should be serviced and repaired by a qualified technician only.
- If the casing of the CD changer is damaged, laser radiation can occur with a risk of injury.