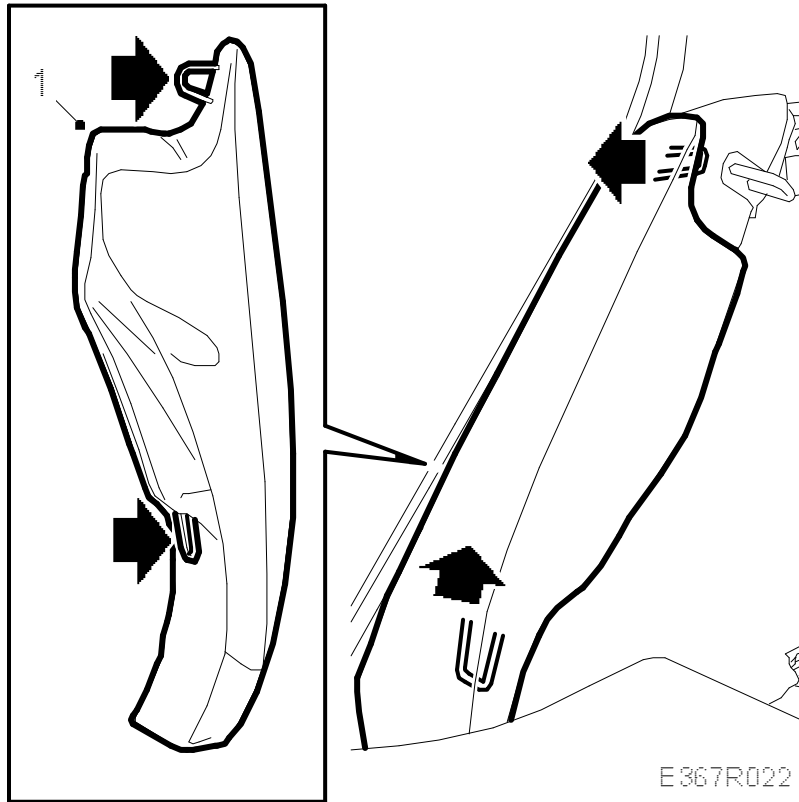
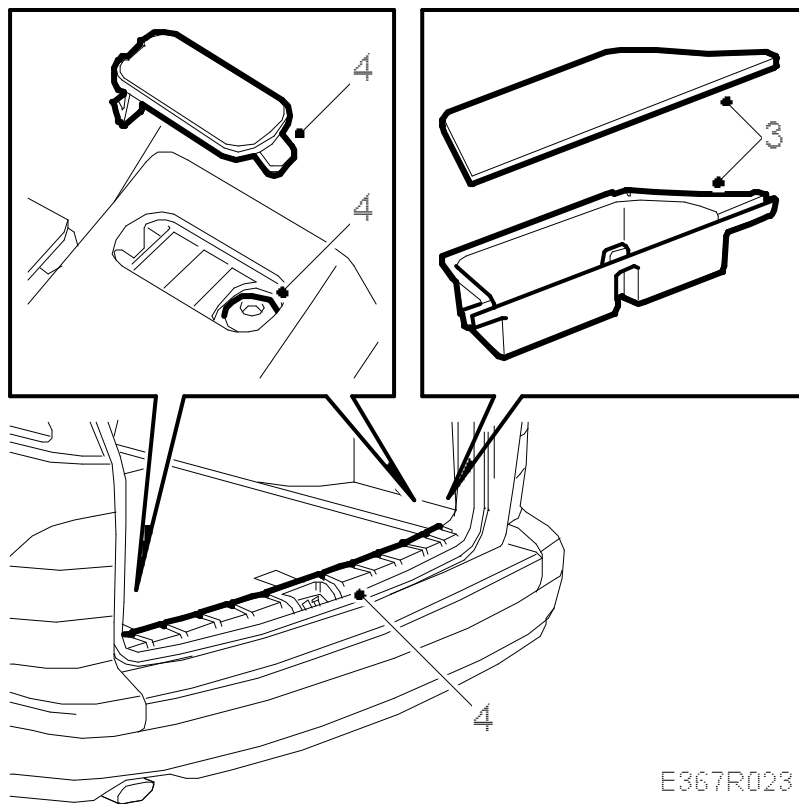


Speaker, luggage compartment (5D)**To remove**

1. Fold down the right-hand rear seat backrest and remove the side bolster between the rear right door and the backrest.
2. Lift out the concealing panel.
- 3.

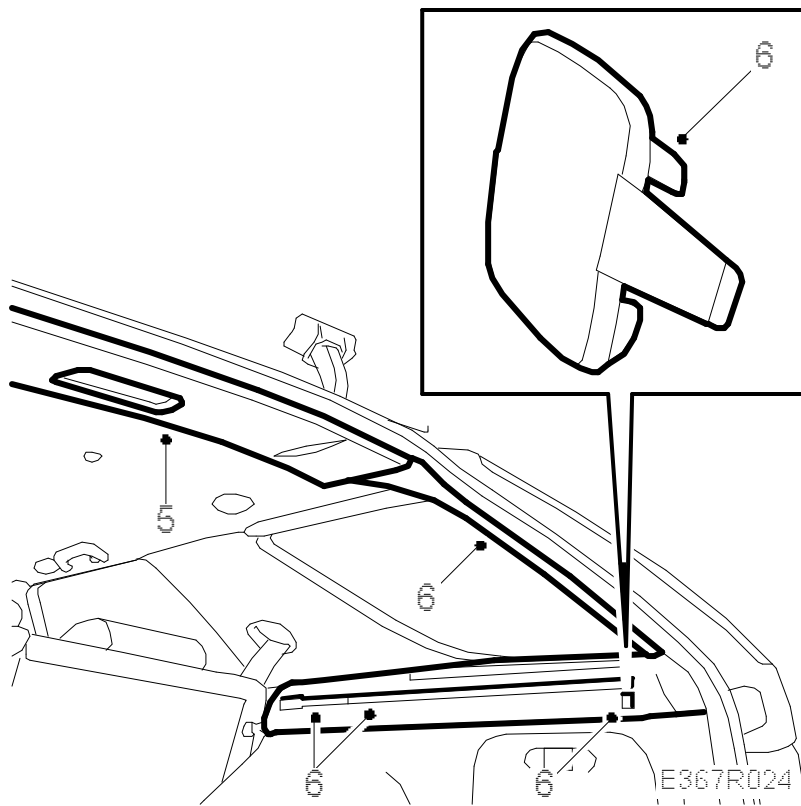
Remove the right-hand storage compartment in the floor.



E367R023

4. Remove the scuff plate by first removing the covers on the right and left-hand sides. Undo the screws securing the scuff plate to the sill. Pull off the scuff plate, it is fastened with clips.
- 5.

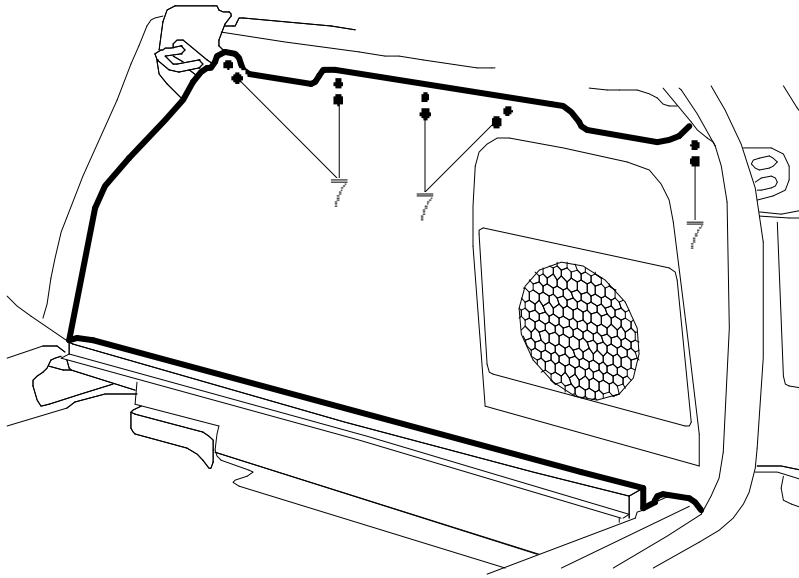
Remove the rear roof cover and unplug the connections for the lighting.



6. Remove the right-hand D-pillar trim and the right-hand concealing panel support (3 screws).

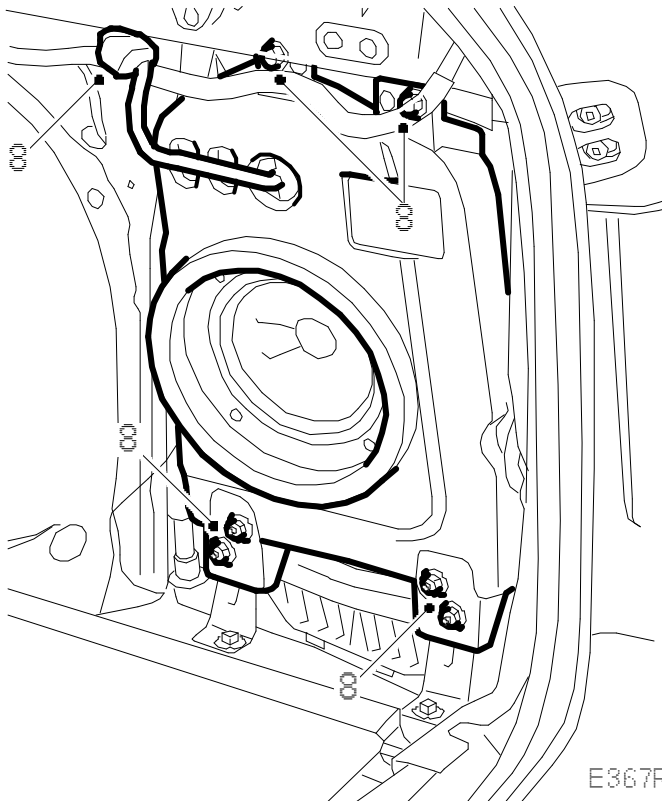
7.

Remove the five screws in the top of the right-hand side trim and lift out the trim.

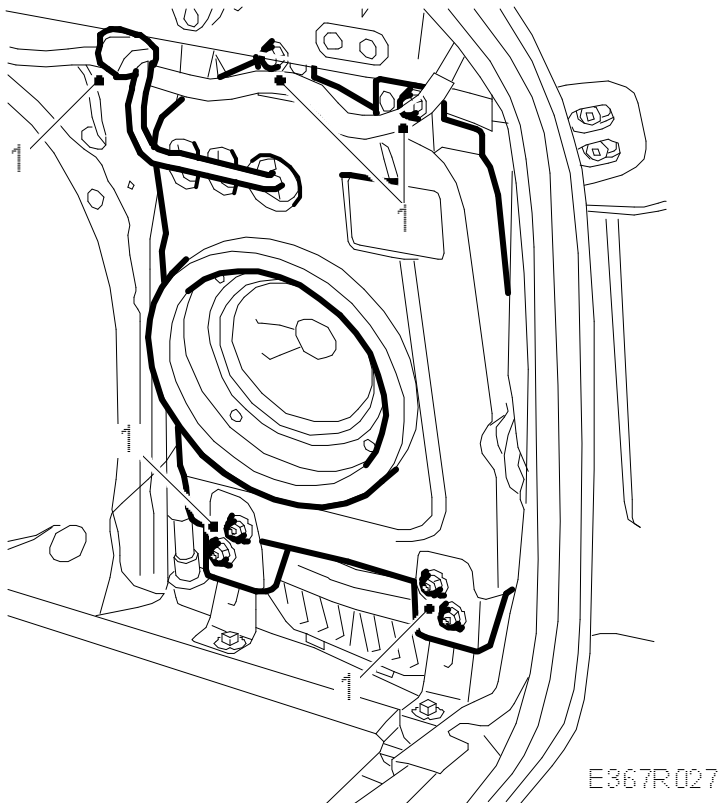


E367R025

8. Remove the bass speaker and unplug the connector.

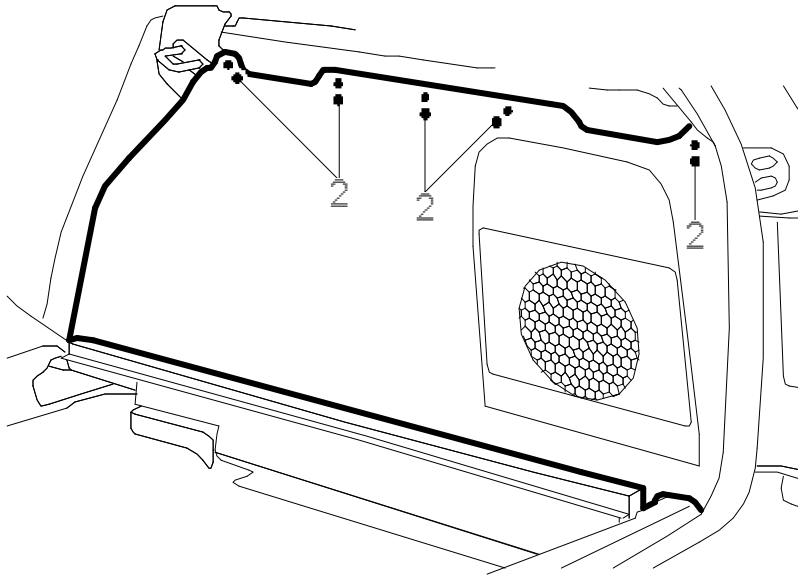


E367R026

To fit

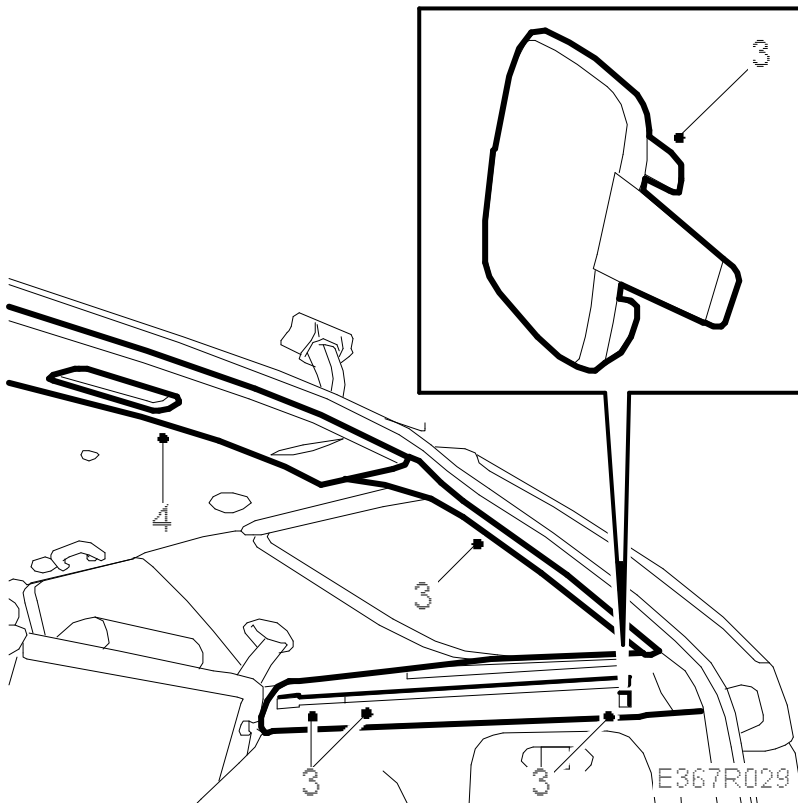
1. Plug in the connector to the bass speaker and fit the speaker.
- 2.

Position the side trim and tighten the five screws at the top.



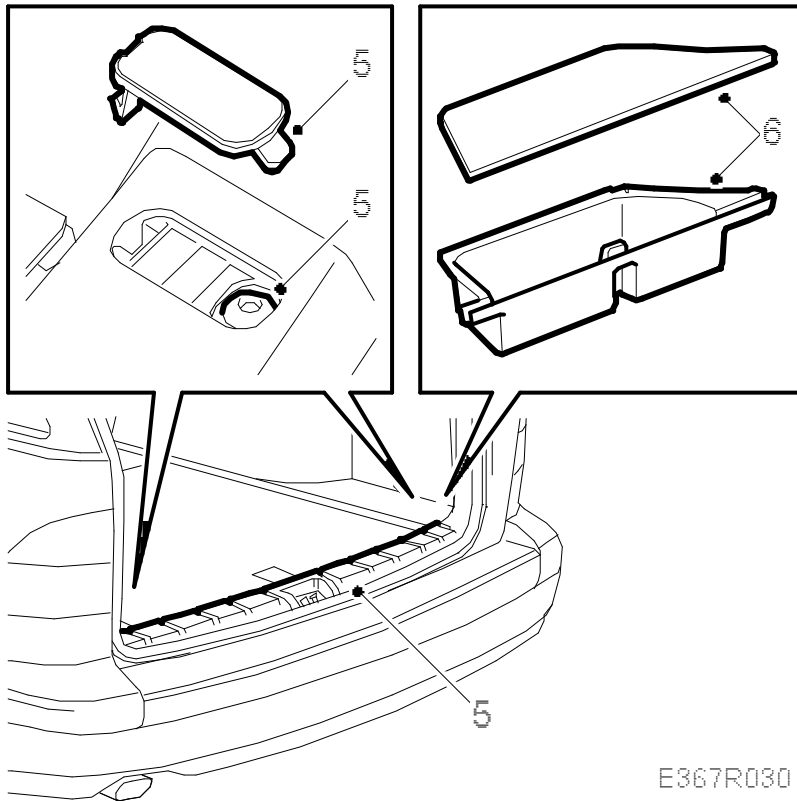
E367R028

3. Refit the concealing panel support (3 screws) and the D-pillar trim.



E367R029

4. Fit the rear roof cover and plug in the lighting.
5. Press in the scuff plate clips and screw on the scuff plate. Fit the covers over the screws and position the sealing strip over the scuff plate.



6. Fit the storage compartment in the floor.
7. Lift in the concealing panel.
- 8.

Fit the side bolster between the rear right door and the backrest and fold up the rear seat backrest.

