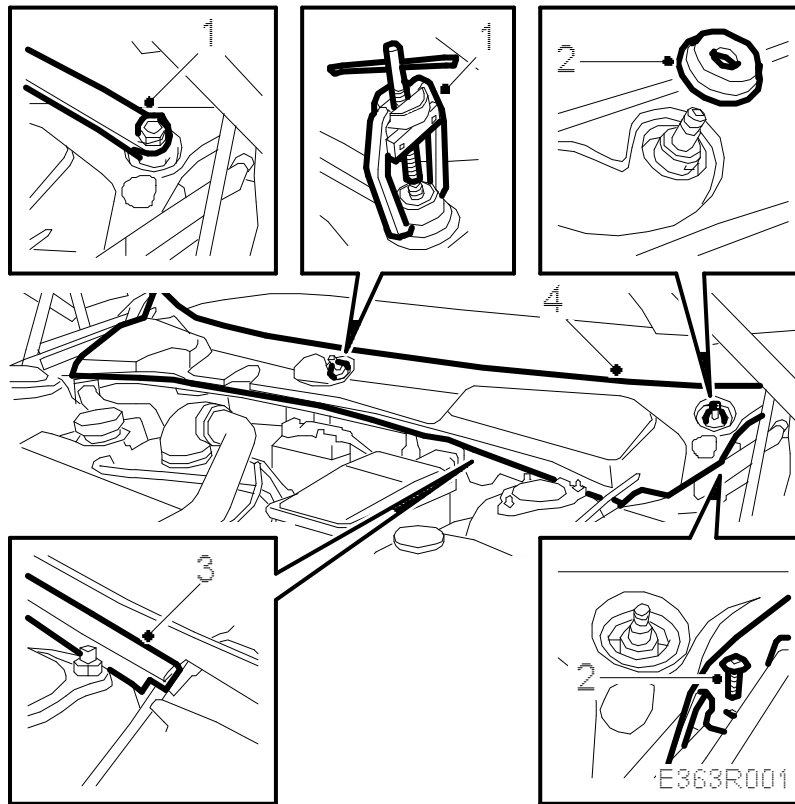


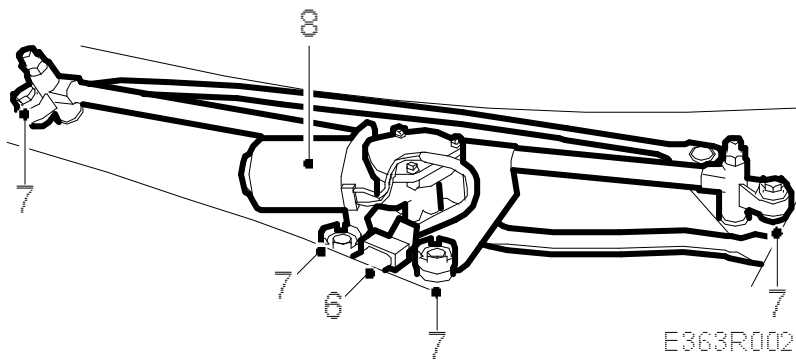
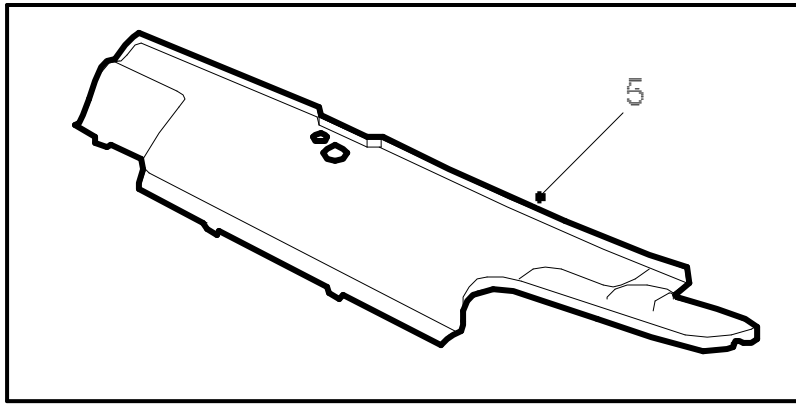
## Windscreen wiper assembly

### To remove



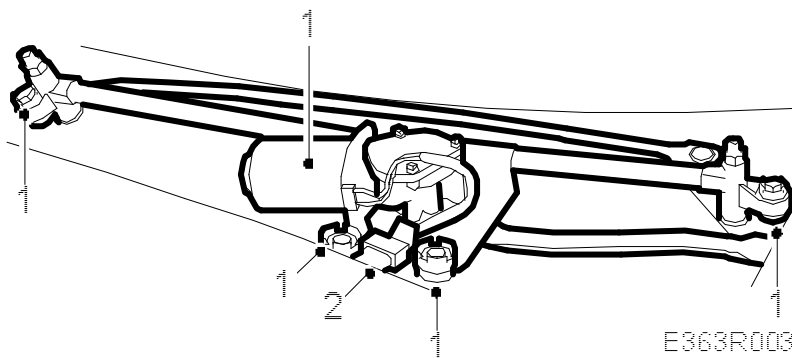
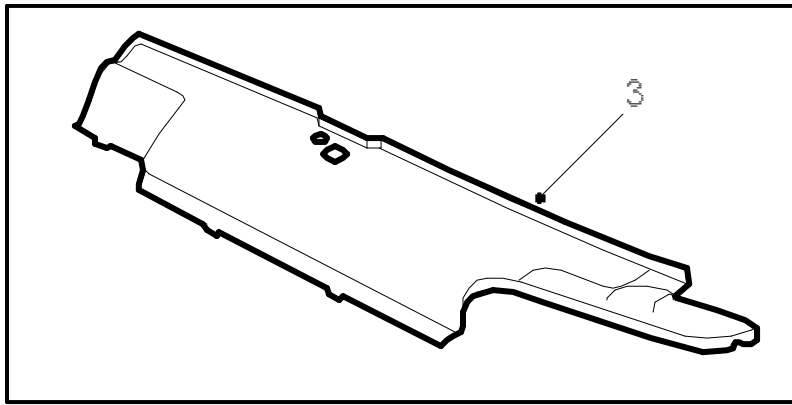
1. Remove the retaining nuts from the windscreen wiper arms. Pull off the wiper arms using [85 80 144 Puller, windscreen wiper arm](#).
2. Remove the protective cover retaining screws and the rubber seals from the wiper spindles.
3. Loosen the rubber moulding along the edge of the bulkhead and let it rest on the wings.
4. Lift off the cover on the bulkhead partition space.
- 5.

Lift off the cover over the centre spindle and the climate housing.



6. Unplug the wiper motor connectors.
7. Remove the 4 wiper assembly retaining screws.
8. Lift out the whole windscreen wiper assembly.

**To fit**

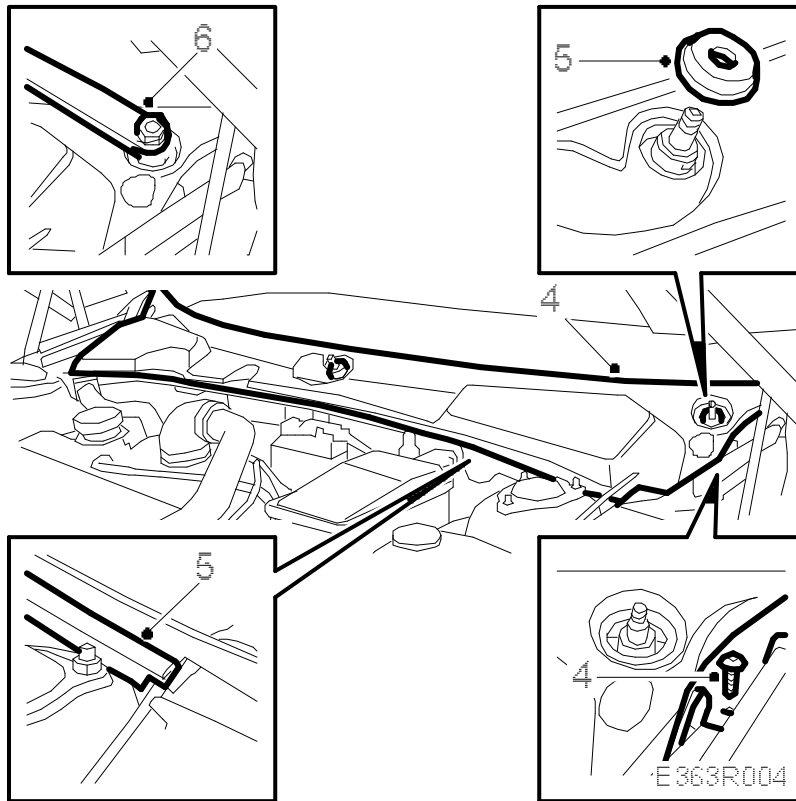


1. Fit the windscreen wiper assembly.

**Tightening torque: 8 Nm (6 lbf ft).**

2. Plug in the connectors.
3. Fit the cover over the centre spindle and climate housing.
- 4.

Fit the cover on the bulkhead partition space.




---

### Important

Make sure that the 5 catches are under the windscreen

---

5. Fit the rubber moulding on to the bulkhead and the spindles' rubber seals.

6. Fit the wiper arms at the correct angle.

The distance between the wiper blade mounting on the wiper arm and the cover should be:

Driver's side = 39 mm

Passenger side = 57 mm.

### Programming

Extra strokes (yes/no).