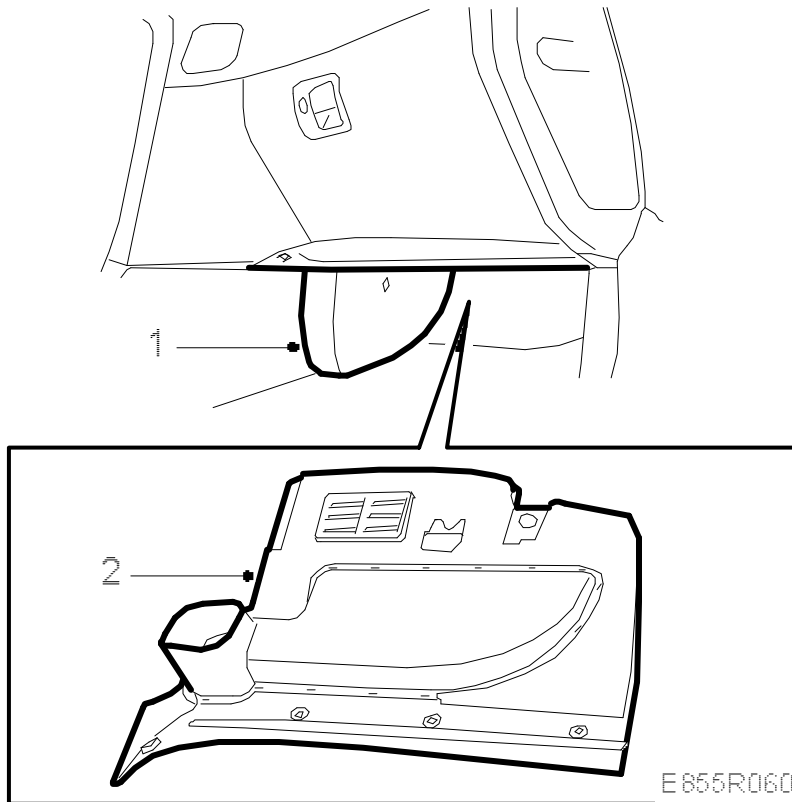
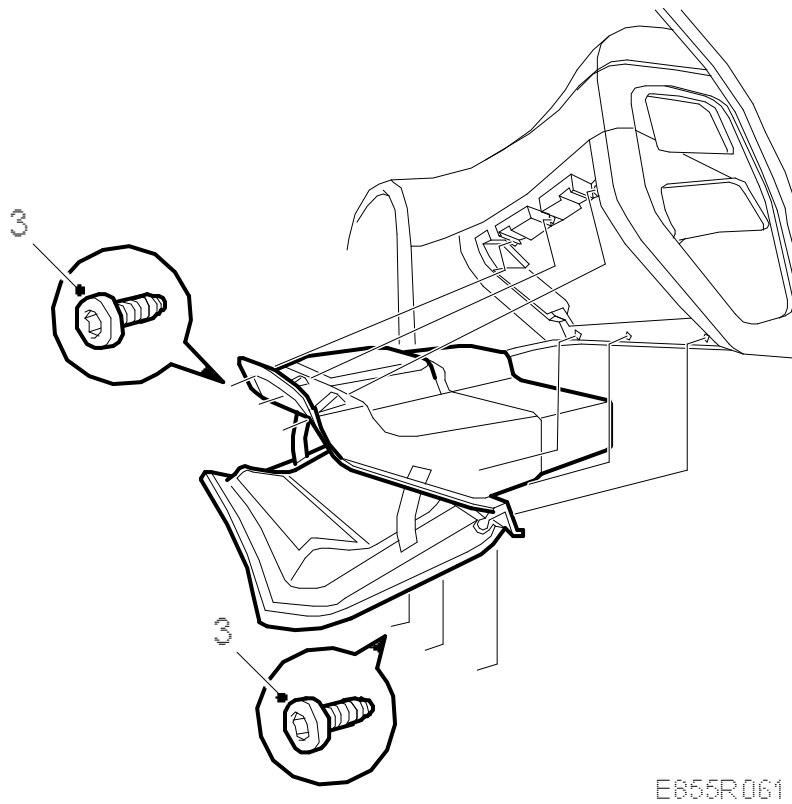


**Glove box****To remove**

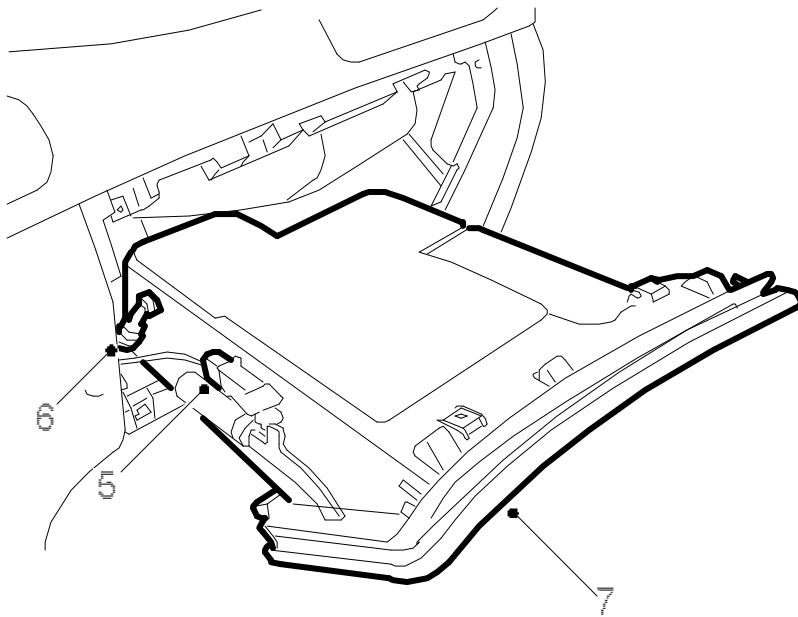
1. Remove the cover for the heating and ventilation unit.
2. Remove the lower part of the dashboard under the glove box, 4 screws. There are clips on the front.
- 3.

Remove the floor lighting from the lower dashboard panel.



4. Undo 3 retaining screws underneath and 3 retaining screws inside the glove box.
- 5.

Lift out the glove box slightly and unplug the connector for the glove box light.



E 855R062

**6. Cars with A/C:**

Detach the cooling hose.

**7. Lift out the glove box.****To fit**

Fit in reverse order.