

Crankshaft position sensor

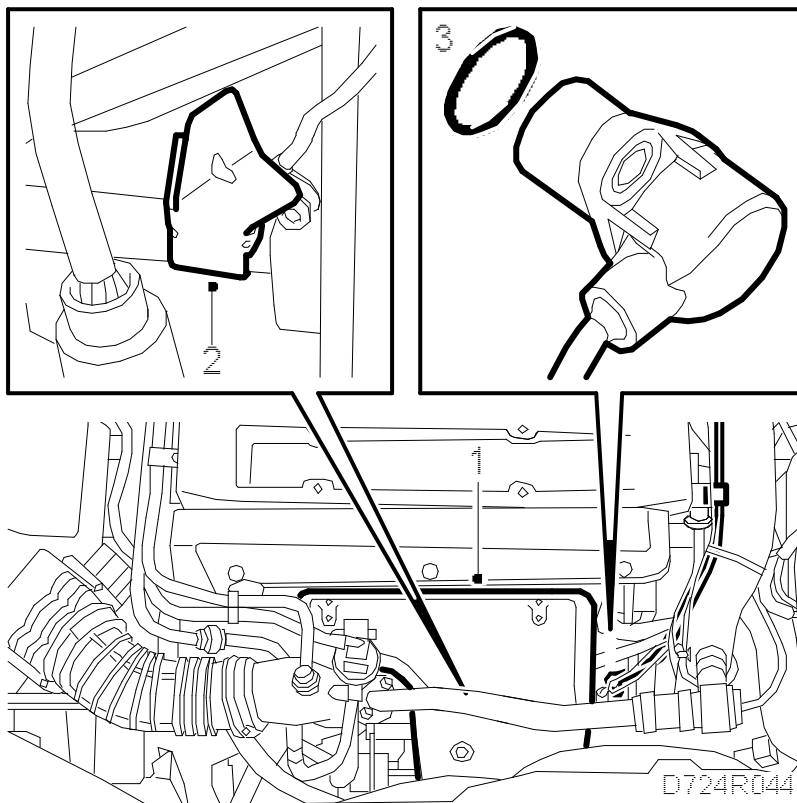


Warning

The exhaust pipe from the turbo can be extremely warm, so exercise extreme care.

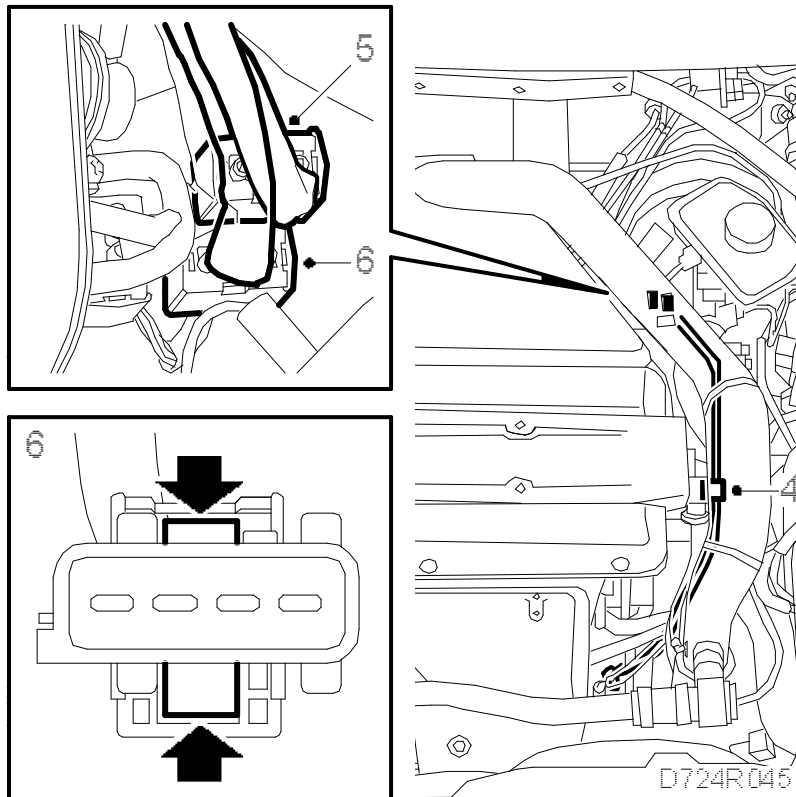
To remove

1. Undo the exhaust manifold heat shield and the bypass pipe with valve.



2. Undo the screw securing the heat shield and sensor.
3. Detach the sensor and O-ring.
- 4.

Follow the sensor connecting cable and undo the clip on the water pipe.

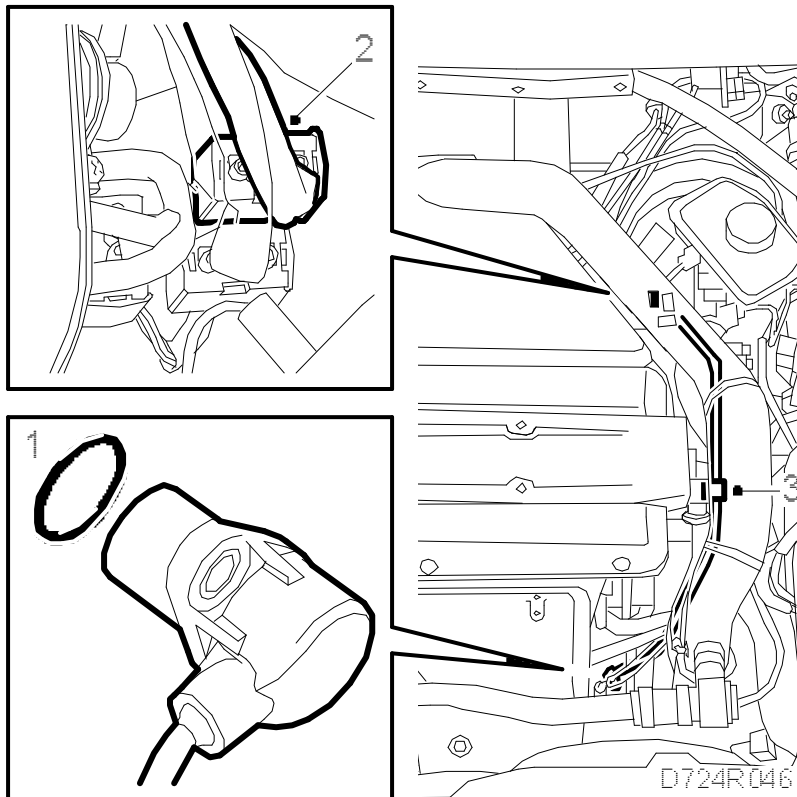


5. Unplug the top part of the connector for the front oxygen sensor.
6. Unplug the top part of the connector for the position sensor and then detach the connector from the holder by carefully pressing in the catches with a small screwdriver.
7. Remove the position sensor.

To fit

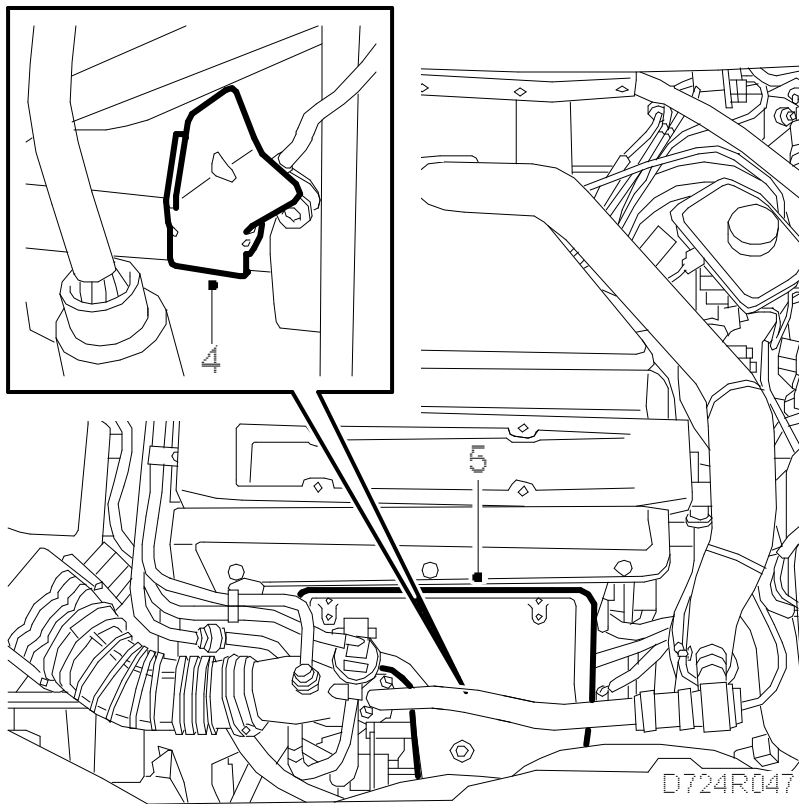
- 1.

Fit the sensor provisionally so that the cable runs along the water pipe. Change the O-ring if necessary and lubricate it with engine oil.



2. Spray the connector with Kontakt 61 (part no. 30 04 520) and mount the connector to the holder. Plug in the connectors.
3. Secure the cables with the clip. Take care not to pinch or damage the cable with the clip.
- 4.

Press in the sensor and screw it on with the O-ring fitted together with the heat shield. Make sure the O-ring is positioned correctly so that the sensor bottoms in the engine block. Otherwise, there is a risk of the sensor mounting lug breaking off.



5. Fit the heat shield and bypass pipe with valve.
6. Start the engine and check for oil leaks.