

Fuel pump

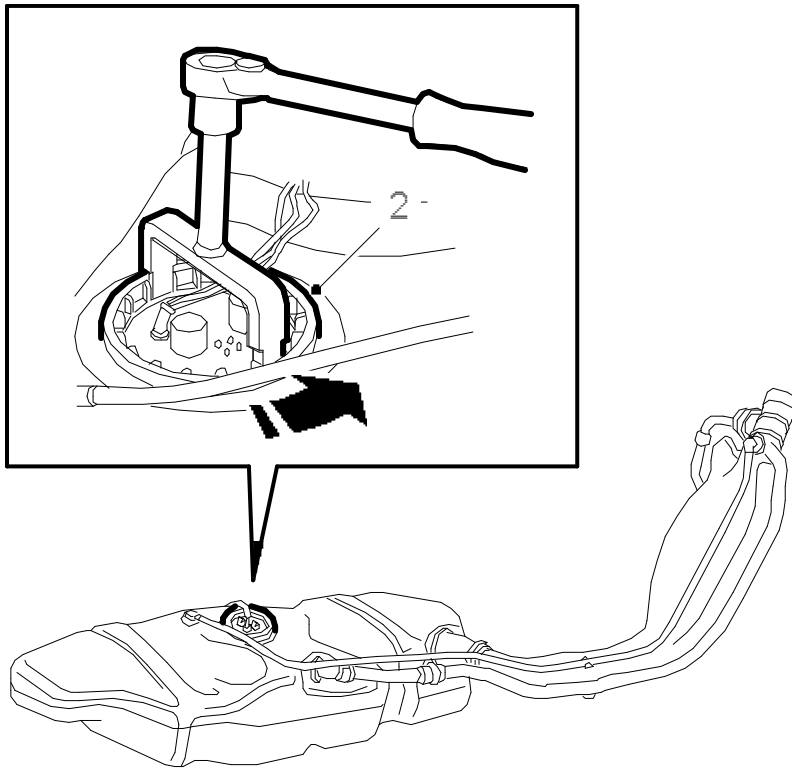


Warning

Removing the fuel pump involves partial dismantling of the car's fuel system. The following points must therefore be observed in connection with the work:

- Work only in a well-ventilated area! If approved equipment for the extraction of fuel vapours is available, be sure to use it.
- Wear suitable gloves! Prolonged contact with fuel can cause skin irritation or dermatitis.
- Keep a class BE fire extinguisher close at hand! Beware of sparks caused by short circuits and when connecting and disconnecting leads in electrical circuits.
- No smoking anywhere in the vicinity.

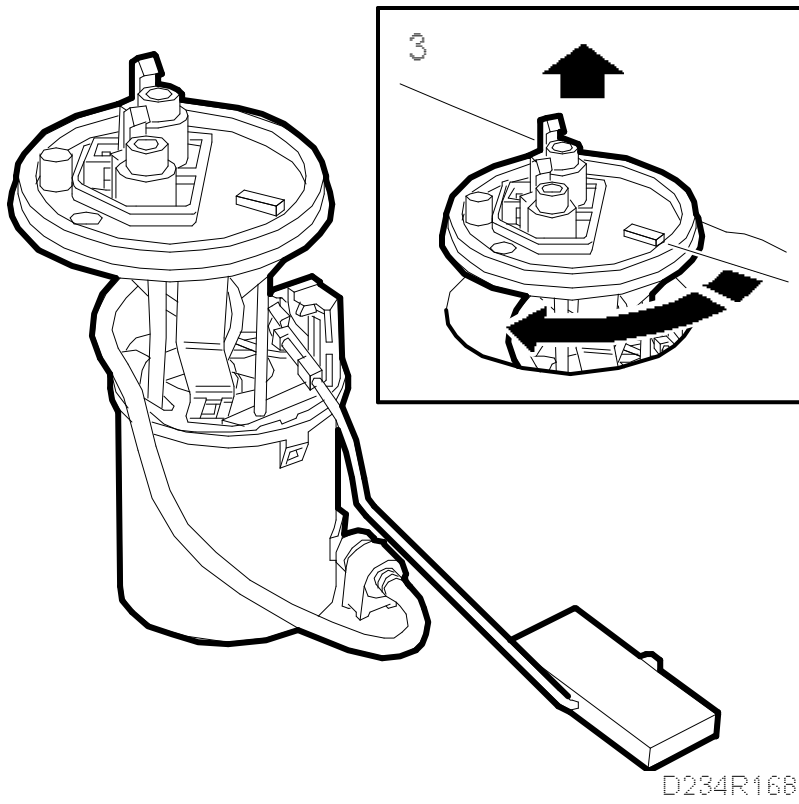
Dismantling



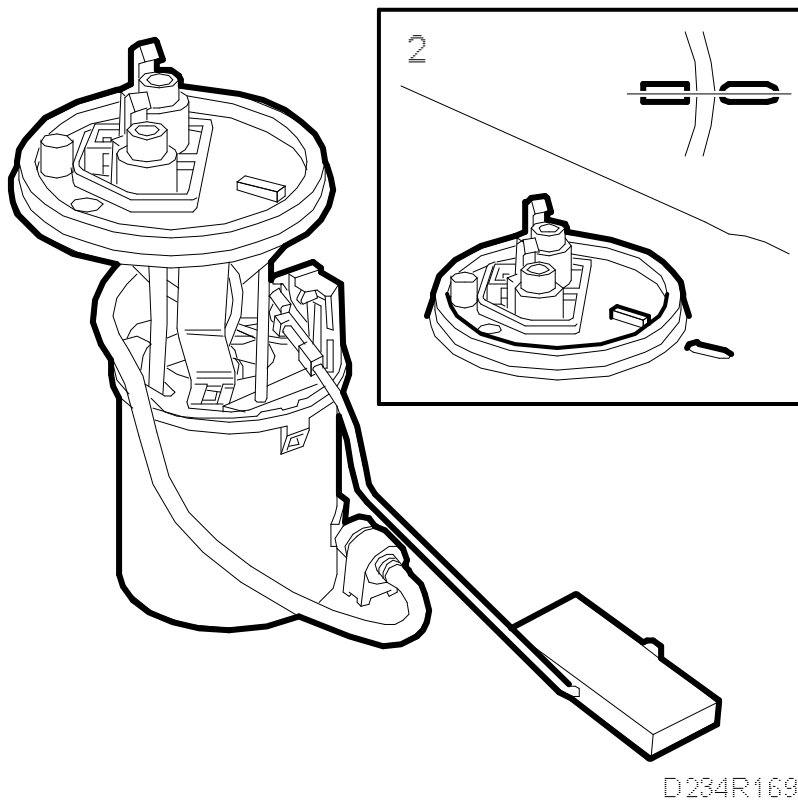
D234R167

1. Remove the fuel tank. See [Fuel tank](#).
2. Remove the screw ring on top of the fuel pump. Use special tool no. 83 94 462.
- 3.

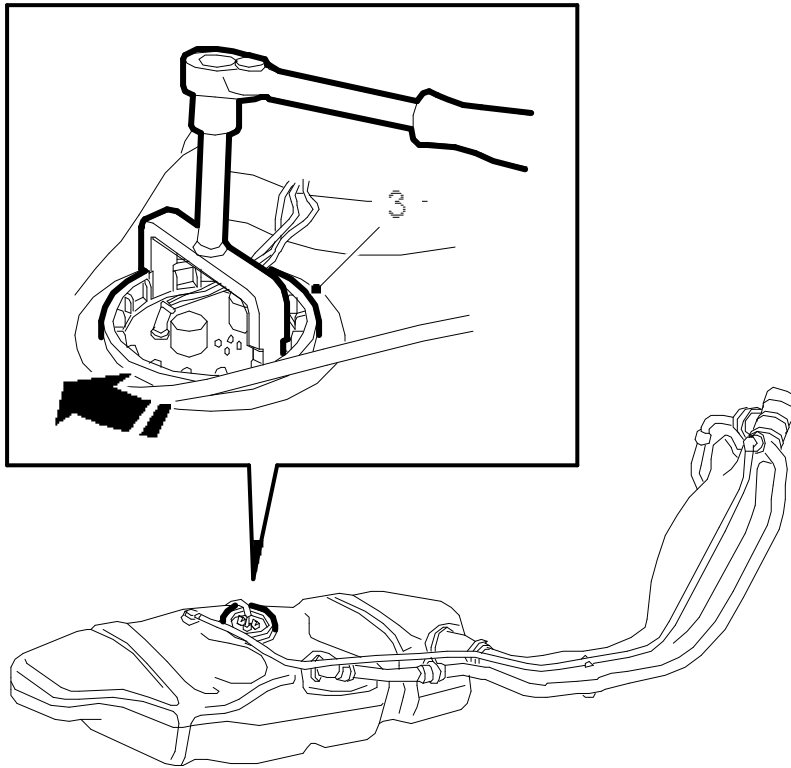
Lift the pump until the top of it is about 50 mm above the fuel tank. Then, turn it about 80 degrees and carefully remove the pump.



To fit



1. Fit a new O-ring in the groove in the tank. Apply a thin layer of vaseline, part no. 30 06 665, or equivalent.
2. Carefully insert the pump in its correct position. Make sure the index marks on the tank and the fuel pump are aligned correctly.
3. Fit the screw ring.



D234R170

Tightening torque 75 Nm (55 lbf ft)

Important

Inspect the fuel line O-rings and replace as necessary.

4. Fit the tank. See [Fuel tank](#).