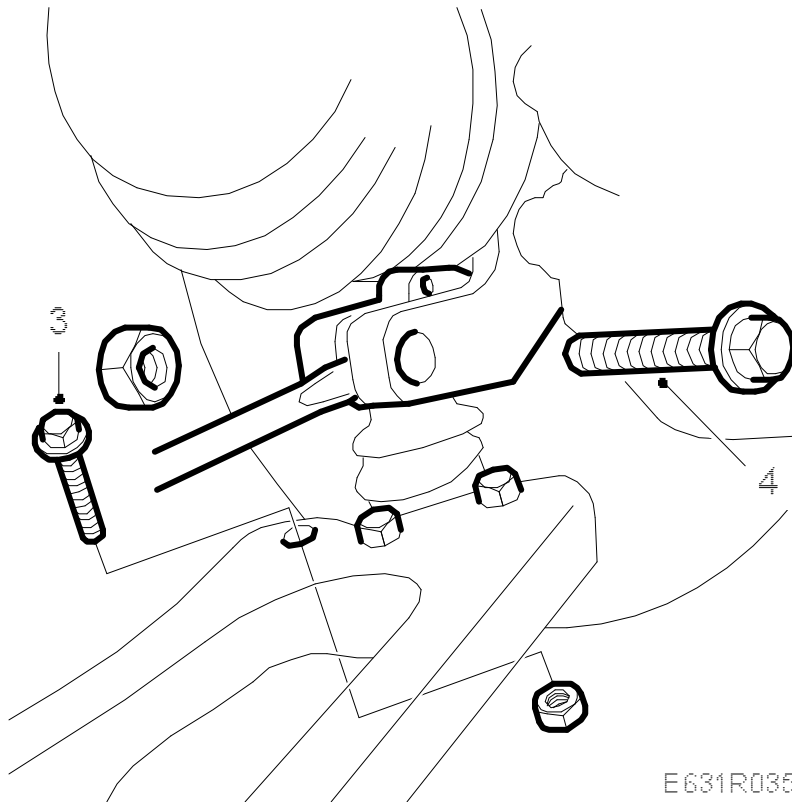


Ball joint, steering swivel member

To remove

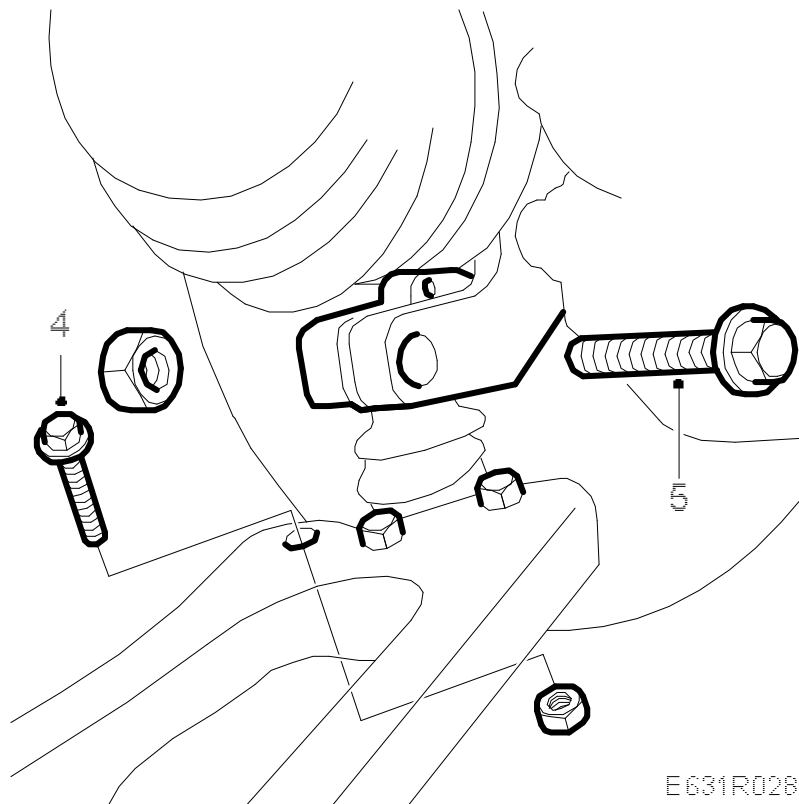


1. Raise the car. If a jack is used, safety stands should be placed under the car.
2. Remove the wheel.
3. Remove the bolts securing the ball joint to the suspension arm.
4. Remove the bolt securing the ball joint to the steering swivel member. Remove the ball joint.

Note

If the steering swivel member's ball joint does not come away easily, a screwdriver or the like can be used to prise apart the clamping jaws of the steering swivel member.

To fit



1. Clean the ball joint's seat on the suspension arm.
2. Fit the steering swivel member's ball joint in the steering swivel member, insert the bolt securing the steering swivel member to the ball joint and screw on the nut. Make sure that the bolt fits in the milled recess on the ball joint.

**Warning**

Make sure that the journal on the ball joint sticks up above the steering swivel member mounting.

3. Position the ball joint on the suspension arm.
4. Tighten the bolts securing the steering swivel member's ball joint to the suspension arm.

Tightening torque, M8 30 Nm +90° (22 lbf ft +90°)

Tightening torque, M10 60 Nm +30° (44 lbf ft +30°)

5. Tighten the bolt securing the steering swivel member's ball joint to the steering swivel member.

Tightening torque 95 Nm (70 lbf ft)

6. Fit the wheel, see [Wheels](#).

Tightening torques

aluminium wheel 110 Nm (81 lbf ft)

steel wheel 50 Nm + 2x90°, max. 110 Nm (37 lbf ft + 2x90°, max. 81 lbf ft)

Lower the car to the floor.