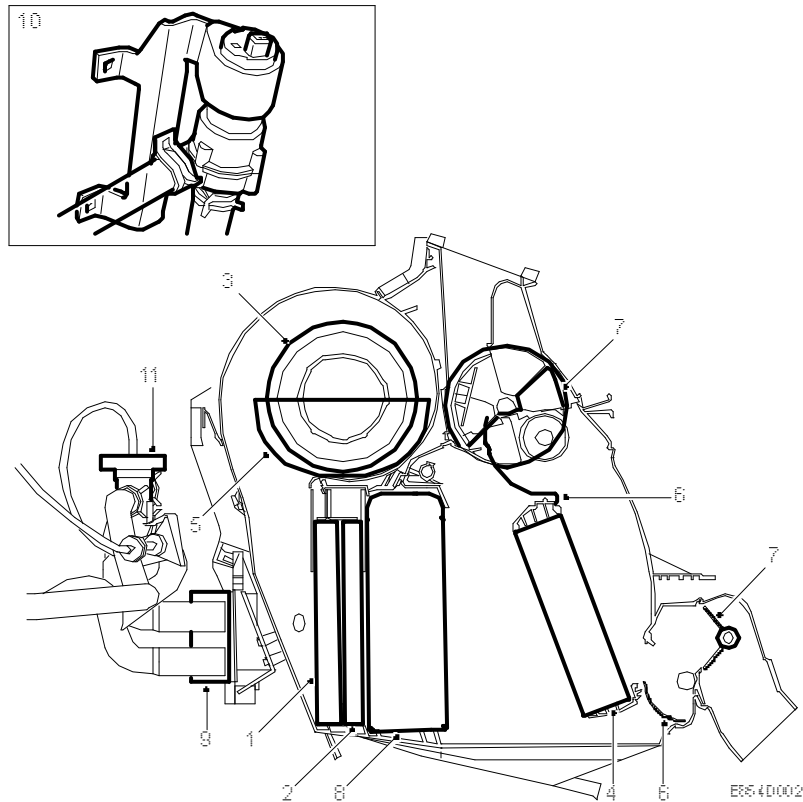


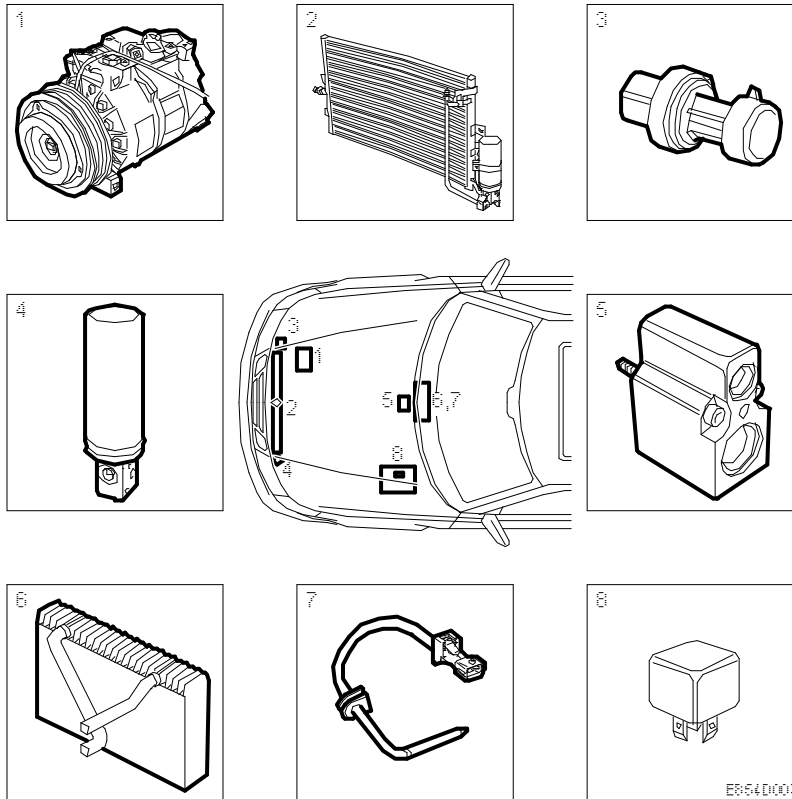
Main components

Heating and ventilation



1. Fresh-air filter. See [Fresh-air filter](#).
2. Evaporative emission canister (option). See [Fresh-air filter](#).
3. Ventilation fan
4. Heat exchanger
5. Air recirculation flap. See [Air recirculation](#).
6. Air-blending flap. See [Air blending](#).
7. Air distribution damper. See [Air distribution](#).
8. Evaporator (cars with A/C)
9. Expansion valve (cars with A/C)
10. Circulation pump (applies to V6 cold markets)

11. Water shut-off valve

A/C system

1. Compressor (170). See [Compressor](#).
2. Condenser. See [Condenser](#).
3. Pressure sensor (620). See [Pressure sensor](#).
4. Receiver. See [Receiver](#).
5. Expansion valve. See [Expansion valve](#).
6. Evaporator. See [Evaporator](#).
7. Temperature sensor, evaporator (621). See [Temperature sensor](#).
8. A/C relay (156)